



**hp psc 1310 series
all-in-one**



user guide

**hp psc 1310 series
all-in-one**

© Copyright 2004 Hewlett-Packard Development Company, L.P.

The information contained herein is subject to change without notice.

Reproduction, adaptation or translation without prior written permission is prohibited, except as allowed under the copyright laws.



Adobe and the Acrobat logo are either registered trademarks or trademarks of Adobe Systems Incorporated in the United States and/or other countries.

Portions Copyright © 1989-2003 Palomar Software Inc. The HP PSC 1310 Series includes printer driver technology licensed from Palomar Software, Inc. www.palomar.com

Copyright © 1999-2003 Apple Computer, Inc.

Apple, the Apple logo, Mac, Mac logo, Macintosh, and Mac OS are trademarks of Apple Computer, Inc., registered in the U.S. and other countries.

Publication number: Q5763-90152

First edition: February 2004

Windows®, Windows NT®, Windows ME®, Windows XP®, and Windows 2000® are U.S.-registered trademarks of Microsoft Corporation.

Intel® and Pentium® are registered trademarks of Intel Corporation.

notice

The only warranties for HP products and services are set forth in the express warranty statements accompanying such products and services. Nothing herein should be construed as constituting an additional warranty. HP shall not be liable for technical or editorial errors or omissions contained herein.

The Hewlett-Packard Company shall not be liable for incidental or consequential damages in connection with, or arising out of the furnishing, performance, or use of this document and the program material which it describes.

Note: Regulatory information can be found in this User Guide.



It is not lawful in many places to make copies of the following items. When in doubt, check with a legal representative first.

- Governmental paper or documents:
 - Passports
 - Immigration papers
 - Selective service papers
 - Identification badges, cards, or insignias
- Governmental stamps:
 - Postage stamps
 - Food stamps
- Checks or drafts drawn on Governmental agencies
- Paper currency, traveler's checks, or money orders
- Certificates of deposit
- Copyrighted works

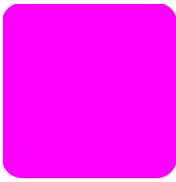
safety information

Warning! To prevent fire or shock hazard, do not expose this product to rain or any type of moisture.

Always follow basic safety precautions when using this product to reduce risk of injury from fire or electric shock.

Warning! Potential shock hazard

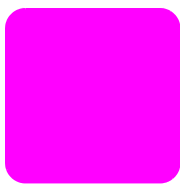
- 1 Read and understand all instructions in the Setup Poster.
- 2 Use only a grounded electrical outlet when connecting the device to a power source. If you do not know whether the outlet is grounded, check with a qualified electrician.
- 3 Observe all warnings and instructions marked on the product.
- 4 Unplug this product from wall outlets before cleaning.
- 5 Do not install or use this product near water or when you are wet.
- 6 Install the product securely on a stable surface.
- 7 Install the product in a protected location where no one can step on or trip over the line cord, and where the line cord will not be damaged.
- 8 If the product does not operate normally, see the online Troubleshooting help.
- 9 No operator-serviceable parts inside. Refer servicing to qualified service personnel.
- 10 Use in a well-ventilated area.



contents

1	quick start	1
	front panel overview	1
	PictBridge camera port overview	3
	front panel status lights	3
	use your hp psc with a computer	6
2	load originals and load paper	11
	load originals	11
	load an original photo on the glass	12
	load letter or A4 paper	12
	load envelopes	14
	load postcards, Hagaki cards, or 4 by 6 inch (10 by 15 cm) photo paper recommended papers	14 15
	load other types of paper in the paper tray	15
	set the paper type	15
	avoid jams	16
3	print from a camera	17
	connect a camera	17
	print photos from your camera	17
4	use the copy features	19
	make copies	19
	perform special copy jobs	20
	stop copying	22
5	use the scan features	23
	scan an original	23
	stop scanning	24
6	order supplies	25
	order media	25
	order print cartridges	25
	order other supplies	25
7	maintain your hp psc	27
	clean the glass	27
	clean the lid backing	27
	clean the exterior	28
	work with print cartridges	28
	self-maintenance sounds	36
8	get hp psc 1310 series support	37
	get support and other information from the Internet	37
	hp customer support	37

- prepare your hp psc for shipment41
- hp distribution center43
- 9 warranty information45**
 - duration of limited warranty45
 - warranty service45
 - warranty upgrades45
 - returning your hp psc for service46
 - hewlett-packard limited global warranty statement46
- 10 technical information49**
 - paper specifications49
 - physical specifications50
 - power specifications50
 - environmental specifications50
 - environmental product stewardship program50
 - regulatory notices51
 - declaration of conformity54
- 11 hp instant share setup and use55**
 - use hp instant share in five easy steps (Windows)55
 - send a photo or image using your hp psc (Macintosh)57
 - why should I register with hp instant share (Windows)?58
- 12 troubleshooting information59**
 - installation troubleshooting59
 - operational troubleshooting65
- Index.67**



get help

This User Guide contains information on using your HP psc and provides additional troubleshooting assistance for the installation process. The User Guide also contains information on how to order supplies and accessories, technical specifications, support, and warranty information.

The table below lists additional sources of information for your HP psc.

help	description
Setup Guide	The Setup Poster provides instructions for setting up and configuring your HP psc. Make sure you use the correct setup information for your operating system (Windows or Macintosh).
HP Image Zone Help	The HP Image Zone Help provides detailed information on using the software for your HP psc. For Windows users: Go to the HP Director , and click Help . For Macintosh users: Go to the HP Director , and click Help , then click hp image zone help .
User Guide	The User Guide you have in your hands contains information on using your HP psc and provides additional troubleshooting assistance for the installation process. The User Guide also contains information on how to order supplies and accessories, technical specifications, support, and warranty information.
Troubleshooting help	To access troubleshooting information: For Windows users: In the HP Director , click Help . Open the Troubleshooting book in the HP Image Zone Help, then follow the links to general troubleshooting as well as links to Troubleshooting help that is specific to your HP psc. Troubleshooting is also available from the Help button that appears on some error messages. For Macintosh users: Open the Apple Help Viewer, click hp image zone help , then click hp psc 1310 series . There is also a Troubleshooting chapter available in this User Guide.
Internet help and technical support	If you have Internet access, you can get more information from the HP website at: www.hp.com/support The website also provides answers to frequently asked questions.
Readme file	After you install your software, you can access the Readme file (if any) from either the HP PSC 1310 Series CD-ROM or the HP PSC 1310 Series program folder. A Readme file contains late-breaking information that does not appear in the User Guide or the online help.

help	description
Dialog-box help (Windows only)	<p>For Windows: Use one of the following ways to find information on a specific feature:</p> <ul style="list-style-type: none">• Right-click on the feature• Select the feature and press F1• Select the ? in the upper-right corner then click on the feature

Your HP psc can be used for making copies and printing photos from a PictBridge-compliant camera without turning on your computer. You can do more with your HP psc by using the HP Director software that you installed on your computer during the initial setup. The HP Director includes troubleshooting tips, product-specific help, and enhanced copy, scan, and photo functionality. For more information on the use of the HP Director, see [use your hp psc with a computer](#) on page 6.

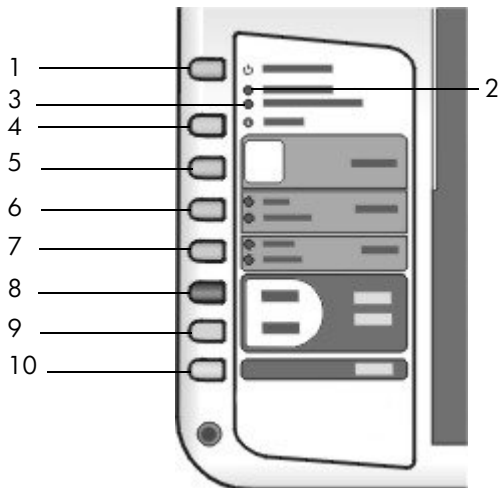
This section contains the following topics:

- [front panel overview](#) on page 1
- [PictBridge camera port overview](#) on page 3
- [front panel status lights](#) on page 3
- [use your hp psc with a computer](#) on page 6

front panel overview

Use the graphic and table below to become familiar with the front panel features of your HP psc.

Note: The front panel cover must be attached to the HP psc by removing the adhesive backing and placing the cover in the appropriate location. The HP psc will not operate unless the front panel cover is attached properly. If your HP psc is not operating properly, refer to the setup instructions for information about attaching the front panel cover.

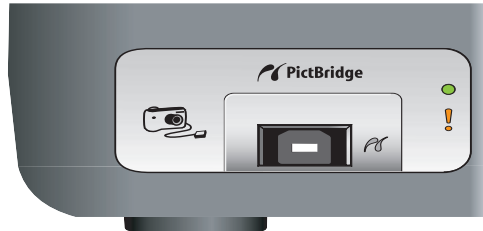


feature	purpose
1	On/Resume: turns the HP psc on and off. Also, resumes a copy or print job after a jam or other error. If the HP psc is in an error state, you can turn it off by pressing On/Resume for 3 seconds. Warning! When the HP psc is off, a minimal amount of power is still supplied to the device. Unplug the power cord to completely disconnect the power supply to the HP psc.
2	Check Paper: lights up to indicate the need to load paper or remove a paper jam.
3	Check Print Cartridge: lights up to indicate the need to reinsert or replace the print cartridge or close the print carriage access door.
4	Cancel: stops a job or exits button settings.
5	Copies (1-9): changes the number of copies for a copy job.
6	Size: changes the copy image size to either 100% or Fit to Page.
7	Paper Type: changes the paper type to Plain or Photo.
8	Start Copy, Black: starts a black-and-white copy.
9	Start Copy, Color: starts a color copy.
10	Scan: starts a scan of an original from the glass.

PictBridge camera port overview

Your HP PSC supports the PictBridge standard. The PictBridge port allows you to connect any PictBridge-compliant camera to the HP PSC with a USB cable and print your photos without using the computer.

Note: Do not use this port to connect your HP PSC to your computer. Also, do not connect any other USB device, such as a mouse, keyboard, or photo card reader to this port.



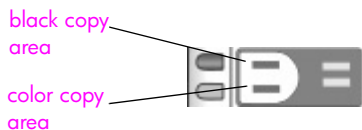
For more information on printing from your PictBridge camera, see [print from a camera](#) on page 17.

front panel status lights

Status lights on the front panel provide information about tasks that your HP psc is currently performing or about maintenance tasks that you need to perform on the device. For example, you can tell if the device is on or off, if it is processing a black-and-white or color copy, if it is out of paper, or if there is a paper jam.

All status lights on the front panel are reset to the default display after two minutes unless there is an error.

Review the graphic and the table on the next page to become familiar with the front-panel status lights that provide information about tasks that your HP PSC is currently performing.

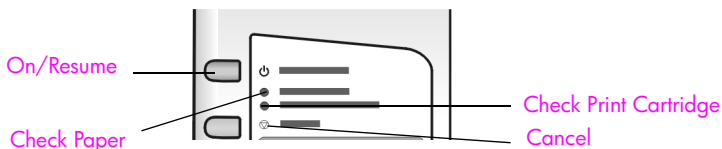


on light (green)	black copy area (backlight)	color copy area (backlight)	explanation	what to do?
Light is off.	Light is off.	Light is off.	Your HP PSC is turned off.	Press the On/Resume button to turn your HP PSC on.
Light is on.	Light is on.	Light is on.	Your HP PSC is turned on and is ready for use.	Begin a scan, copy, or print job from the front panel or from the software.

on light (green)	black copy area (backlight)	color copy area (backlight)	explanation	what to do?
Light is blinking.	Light is on.	Light is on.	Your HP PSC is processing a print, scan, or maintenance job.	Wait for your HP PSC to finish processing the job.
Light is blinking.	Light is blinking.	Light is on.	Your HP PSC is processing a black-and-white copy job.	Wait for your HP PSC to finish processing the job.
Light is blinking.	Light is on.	Light is blinking.	Your HP PSC is processing a color copy job.	Wait for your HP PSC to finish processing the job.
Blinks faster for 3 seconds and then stays illuminated.	Light is on or blinking.	Light is on or blinking.	Your HP PSC is busy doing another task.	Wait for the current job to be completed before starting another job.

In addition to providing information about current tasks, the lights on the front panel can also indicate error conditions.

Review the graphic and the table below to become familiar with the front-panel status lights that provide information about error conditions that your HP PSC is currently experiencing.



If the On light, Check Print Cartridge light, Check Paper light, and Start Copy, Black and Start Copy, Color lights are all flashing, do the following:

- 1 Verify that the front-panel overlay is attached to the HP PSC.
- 2 Turn your HP PSC off and on by disconnecting the power cord and reconnecting.

on light (green)	check paper light	check print cartridge light	explanation	what to do?
Rapid blinking for 20 seconds.	Light is off.	Light is off.	The HP psc is trying to scan and there is a communication problem.	Verify that your computer is on and is connected to the HP psc. Verify that the HP psc software is installed.

on light (green)	check paper light	check print cartridge light	explanation	what to do?
Light is on.	Light is blinking.	Light is off.	The paper tray is empty, the HP psc has a paper jam, or the paper size setting and paper in paper tray are not the same.	<ul style="list-style-type: none"> • Load paper, or remove the paper jam. • Change paper in paper tray to correct size. • Change paper size on the computer software. Then press On/ Resume to continue.
Light is on.	Light is off.	Light is blinking.	<ul style="list-style-type: none"> • Print cartridge access door might be open. • Print cartridges might be missing or not installed properly. • Tape might not have been removed from the print cartridges. • There might be a problem with the print cartridge. 	<ol style="list-style-type: none"> 1 Remove the print cartridges and make sure the tape has been removed. 2 Re-insert the print cartridges and make sure they are properly seated. 3 Close the access door. If the light continues to blink, one of the print cartridges is defective. Do the following: <ol style="list-style-type: none"> 1 Remove the black (or photo) print cartridge. 2 Close the access door. If the light blinks, the tri-color print cartridge is defective and must be replaced. If the light does not blink, the black (or photo cartridge) is defective. For more information on this condition, click the HP psc status icon in the system tray on your computer (Windows only).
Light is on.	Light is blinking.	Light is blinking.	The print carriage is stalled.	Open the print carriage access door and make sure the carriage is not obstructed.

on light (green)	check paper light	check print cartridge light	explanation	what to do?
Light is blinking.	Light is blinking.	Light is blinking.	An error caused the HP psc to stop functioning.	<ol style="list-style-type: none"> 1 Turn the HP psc off and then on. 2 Restart your computer. 3 If the problem is not corrected, unplug the HP psc and plug it in again. <p>If the problem persists, contact HP.</p>

use your hp psc with a computer

If you installed the HP psc software on your computer according to the Setup Poster, you can access all the features of the HP psc using the HP Director.

This section contains the following topics:

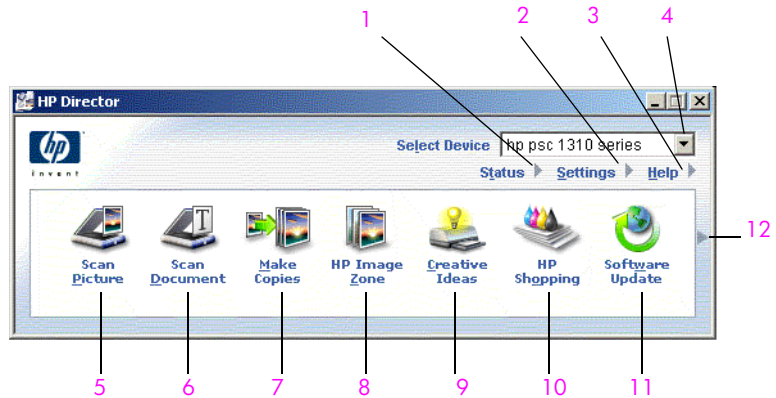
- [open the hp director for Windows users](#) on page 6
- [open the hp director for Macintosh users](#) on page 8

open the hp director for Windows users

- 1 Do one of the following to open the HP Director:
 - Double-click the **HP Director** icon on the desktop.
 - In the Windows taskbar, click **Start**, point to **Programs** or **All Programs (XP)**, point to **HP**, then select **HP Director**.
- 2 In the **Select Device** box, click to see a list of installed HP devices supported by this software.
- 3 Select **HP PSC 1310 Series**.

Note: The HP Director graphic below might appear differently on your computer. The HP Director is customized based on the HP device that is selected. If your device is not equipped with a particular feature (such as fax capability), then the icon for that feature will not display in the HP Director on your computer. Some HP devices might show additional buttons that are not shown below.

Tip: If the HP Director on your computer does not contain any icons, an error might have occurred during the software installation. To correct this, use the Control Panel in Windows to completely uninstall the HP Director software, and then reinstall the HP Director.



feature	purpose
1	Status : select this feature to display the current status of your HP psc.
2	Settings : select this feature to view or change various settings for your HP psc, such as print, scan, or copy.
3	Help : select this feature to access the HP Image Zone Help, which provides software help, a product tour, troubleshooting information for your HP psc, and HP psc product-specific help.
4	Select Device : use this feature to select the device you want to use from the list of installed HP devices.
5	Scan Picture : use this feature to scan an image and display it in the HP Image Zone.
6	Scan Document : use this feature to scan text and display it in the selected text editing software program.
7	Make Copies : use this feature to display the Copy dialog box where you can select the copy quality, number of copies, color, size, and then start a copy.
8	HP Image Zone : use this feature to display the HP Image Zone, where you can view and edit images, print photos in multiple sizes, make and print a photo album, share images through e-mail or a website, or make a multimedia CD.
9	Creative Ideas : use this feature to learn about creative ways to use your HP psc.
10	HP Shopping : use this feature to shop for HP products.
11	Software Update : use this feature to check for software updates for your HP psc.
12	Click this arrow to display tool tips that explain each of the HP Director options.

open the hp director for Macintosh users

Use one of the following methods to launch or access the HP Director, depending on which Macintosh OS you are using.

open the hp director (all-in-one) using Macintosh OS X

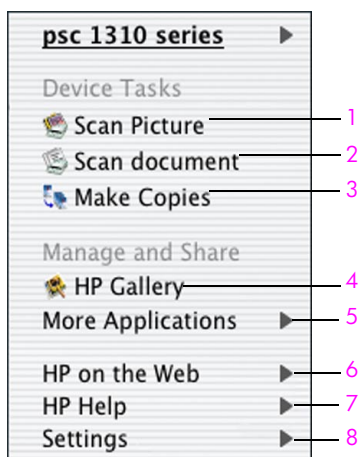
If you are using Macintosh OS X, the HP Director (All-in-One) is launched automatically during the HP Image Zone software installation, and causes the HP Director (All-in-One) icon to be created in the Dock for your device. Access the device capabilities via the HP Director menu that is associated with the HP Director (All-in-One) icon.

Tip: If you do not want the HP Director to launch automatically each time you start your Macintosh, you can change this setting in the HP Director Settings menu.

To display the HP Director menu:

- ▶ In the Dock, click the HP Director (All-in-One) icon for your device. The HP Director menu appears as shown below. Refer to the legend for a brief description of the HP Director features.

Note: If you install more than one HP device, an HP Director icon for each device is appears in the Dock. For example, if you have an HP scanner and an HP psc installed, two HP Director icons are present in the Dock, one for the scanner, and one for the HP psc. However, if you installed two of the same kind of device (for example, two HP psc devices) only one HP Director icon is displayed in the Dock to represent all devices of that kind.



feature	purpose
1	Scan Picture: use this feature to scan an image and display it in the HP Gallery.
2	Scan document: use this feature to scan text and display it in the selected destination text editing software program.
3	Make Copies: use this feature to make a copy in black and white or color.

feature	purpose
4	HP Gallery: use this feature to display the HP Gallery to view and edit images.
5	More Applications: use this feature to select other applications on your computer.
6	HP on the Web: use this feature to select an HP website.
7	HP Help: use this feature to select a source for help with your HP psc.
8	Settings: use this feature to change device settings.

open the hp director using Macintosh OS 9

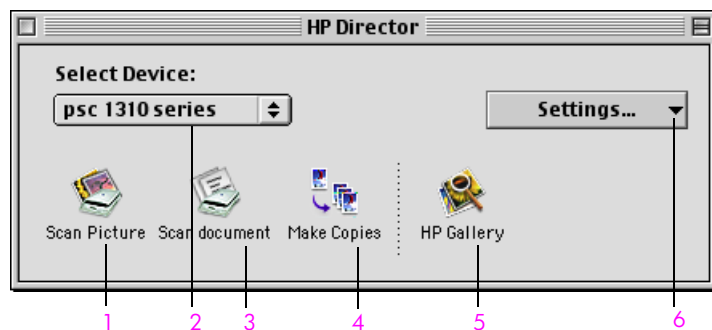
In Macintosh OS 9, the HP Director is launched automatically during the HP Image Zone software installation, and the HP Director appears as an alias on the desktop. Use one of the following methods to launch the HP Director.

- ▶ Double-click the **HP Director** alias on the desktop.
- ▶ Double-click **HP Director** in the Applications:Hewlett-Packard:HP Image Zone Software:HP Director folder.

The HP Director displays only the icons that pertain to the selected device. For more information, see the onscreen hp image zone help that came with your software.

The following figure shows some of the features available through the HP Director for Macintosh OS 9. Consult the legend for a brief explanation of specific features.

Note: The HP Director graphic below might appear differently on your computer. The HP Director is customized based on the HP device that is selected. If your device is not equipped with a particular feature (such as fax capability), then the icon for that feature will not display in the HP Director on your computer. Some HP devices might show additional buttons that are not shown below.



feature	purpose
1	Scan Picture: use this feature to scan an image and display it in the HP Gallery.

feature	purpose
2	Select Device: use this pull-down list to select the HP device you want to use.
3	Scan document: use this feature to scan text and display it in the selected destination text editing software program.
4	Make Copies: use this feature to make a copy in black and white or color.
5	HP Gallery: use this feature to display the HP Gallery to view and edit images.
6	Settings: use this pull-down list to provide access to device settings.

2

load originals and load paper

You can copy and scan originals loaded on the glass. You can also print and copy onto a variety of paper types and paper sizes. It is important that you choose the right paper and make sure that it is loaded correctly and not damaged.

This section contains the following topics:

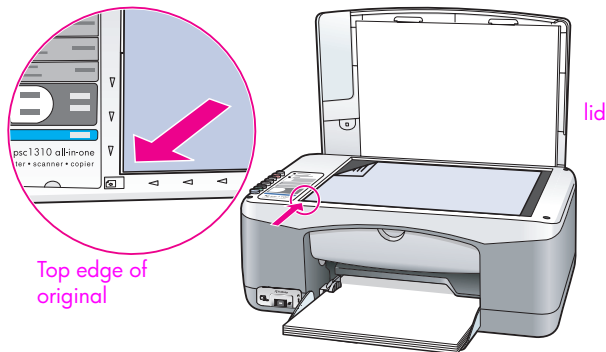
- **load originals** on page 11
- **load an original photo on the glass** on page 12
- **load letter or A4 paper** on page 12
- **load envelopes** on page 14
- **load postcards, Hagaki cards, or 4 by 6 inch (10 by 15 cm) photo paper** on page 14
- **recommended papers** on page 15
- **load other types of paper in the paper tray** on page 15
- **set the paper type** on page 15
- **avoid jams** on page 16

load originals

Review the procedure below for loading originals on the glass of your HP psc.

Note: Some copy options, such as Fit to Page, will not work correctly if the glass and lid backing are not clean. For more information, see **clean the glass** and **clean the lid backing** on page 31.

- 1 To load an original, lift the lid and place the original face down on the left front corner of the glass with the sides of the original touching the left and bottom edges.



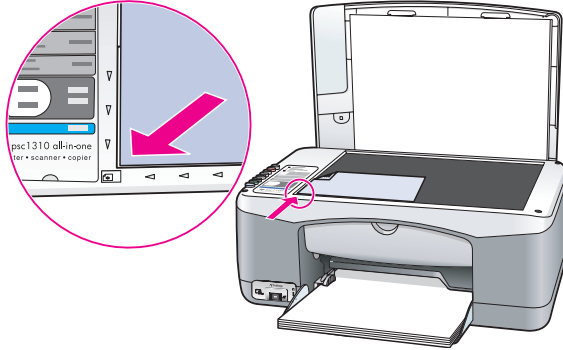
- 2 Close the lid.

For information on making a copy, see **make copies** on page 19. For more information on scanning a document, see **scan an original** on page 23.

load an original photo on the glass

You can make a copy of an original photo from the glass of your HP psc. It is important that you load the original photo on the glass properly to get the best possible copy.

- 1 Load your original photo face down on the left front corner of the glass. Position the photo on the glass so the long edge of the photo is along the front edge of the glass.



- 2 Close the lid.

For more information on special copy jobs, or making borderless copies of photos, see [perform special copy jobs](#) on page 20.

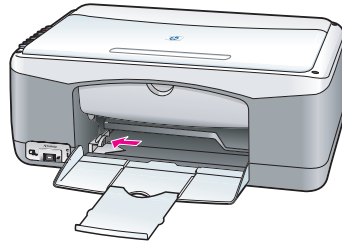
load letter or A4 paper

The following describes the basic procedure for loading letter or A4 paper into the HP psc. For best results, adjust the paper settings each time you change paper types or paper sizes. For more information, see [set the paper type](#) on page 15, and [avoid jams](#) on page 16.

Note: There are specific considerations for loading certain types of paper, postcards, and envelopes. After you review the procedure for loading letter and A4 paper, see [load envelopes](#) on page 14, and [load postcards, Hagaki cards, or 4 by 6 inch \(10 by 15 cm\) photo paper](#) on page 14, and [load other types of paper in the paper tray](#) on page 15.

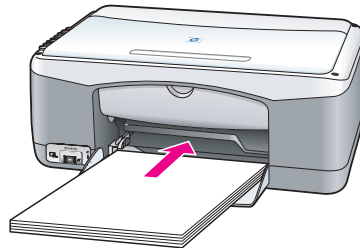
- 1 Lower the paper tray, and if necessary, slide the paper-width guide to the outermost position.
- 2 Fold out the paper-tray extender to catch paper as it exits the device.

Tip: For best results when loading legal-size paper, fold in the paper-tray extender before loading the paper to avoid a paper jam.

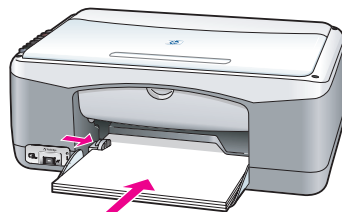


- 3 Tap the stack on a flat surface to align the edges of the paper, and then check the paper for the following:
 - Make sure it is free of rips, dust, wrinkles, and curled or bent edges.
 - Make sure all the paper in the stack is the same size and type.
- 4 Insert paper into the paper tray with the print side down until it stops. To avoid bending the paper, make sure you do not push the paper in too far, or push too hard. If you are using letterhead, insert the top of the page first. Do not use too much paper. Check that the stack of paper contains several sheets but is no higher than the top of the paper-width guide.

Note: Forcing the paper too far into the HP psc might cause multiple sheets of paper to be fed through the print mechanism, or cause a paper jam.



- 5 Slide the paper-width guide in until it stops at the edge of the paper. Make sure that the paper stack lies flat in the paper tray and fits under the tab of the paper-width guide.

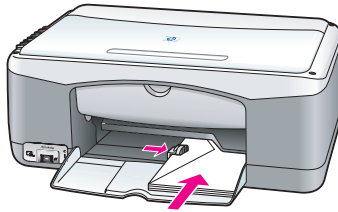


load envelopes

Use the print feature of your word processing software to print to envelopes with your HP PSC. Use envelopes for printing only; copying on to an envelope is not recommended. Do not use shiny or embossed envelopes, or envelopes that have clasps or windows. You can load the paper tray with one or multiple envelopes.

Note: Consult the help files in your word processing software for details on how to format text for printing on envelopes.

- 1 Remove all paper from the paper tray.
- 2 Slide an envelope into the tray, with the envelope flap up and to the left (print side down), until it stops. Do not force the envelope in too far.



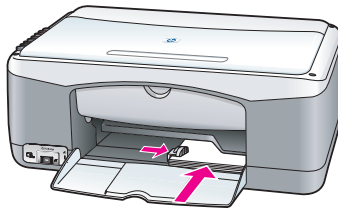
- 3 Adjust the paper-width guide against the envelope. Be careful not to bend the envelope. Do not overload the paper tray when loading multiple envelopes. Make sure the stack of envelopes is no higher than the top of the paper-width guide.

load postcards, Hagaki cards, or 4 by 6 inch (10 by 15 cm) photo paper

The following is the procedure for loading postcards, Hagaki cards, or 4 by 6 inch (10 by 15 cm) photo paper.

- 1 Remove all paper from the paper tray, and then slide a stack of cards into the tray until it stops. Insert the short edge of the card into the HP psc first. Make sure the print side faces down.

Note: If you are using photo paper with perforated tabs, load the photo paper so that the tabs face out towards you.



- 2 Adjust the paper-width guide against the cards until it stops. Make sure the cards fit within the tray. Do not overload it. The stack should be no higher than the top of the paper-width guide.

recommended papers

For the best print quality, use HP papers. Paper that is too thin, paper that has a slick texture, or paper that stretches easily can cause paper jams. Paper that has a heavy texture or does not accept ink can cause printed images to smear, bleed, or not be filled in completely. For more information about HP papers, check our website at:

www.hp.com/support

load other types of paper in the paper tray

The following table provides guidelines for loading nonstandard types of paper. For best results, adjust the paper settings each time you change the paper type or paper size. For more information, see [set the paper type](#) on page 15.

Note: Some paper types might not be available in your country/region.

Note: Photo paper might curl when you remove it from the box. If this occurs, curl the paper the opposite way to flatten it before inserting it into the HP psc.

paper	tips
HP papers	<ul style="list-style-type: none"> • HP Premium Paper: locate the gray arrow on the nonprinting side of the paper, and then load paper with the arrow side facing up. • HP Greeting Card Paper, HP Glossy Greeting Card Paper, or HP Textured Greeting Cards: insert a small stack of greeting cards with the print side down, into the paper tray until it stops.
Labels (works only with printing)	<ul style="list-style-type: none"> • Always use letter or A4 label sheets designed for use with HP inkjet products (like Avery Inkjet Labels), and make sure that the labels are not over two years old. • Fan the stack of labels to make sure none of the pages are sticking together. • Place a stack of label sheets on top of standard paper in the paper tray, print side down. Do <i>not</i> insert labels one sheet at a time.

set the paper type

If you want to use a different type of paper, load that paper in the paper tray. You should then change the paper type settings to ensure the best print quality. This setting refers to copy settings only. If you want to set the paper type for printing, set the properties from the Print dialog box in the software program on your computer.

The following procedure describes how to change the paper type setting on your HP psc.

- 1 Load paper into the HP psc.
- 2 Press **Paper Type** on the front panel to change the setting to **Plain** or **Photo**.

avoid jams

To avoid jams, remove papers from completed print or copy jobs frequently from the paper tray. Excessive amounts of paper from completed print or copy jobs in the paper tray might back up into the HP psc and cause a paper jam. Also, for best results, use recommended papers, and load paper correctly. For more information see, [recommended papers](#) on page 15, and [load letter or A4 paper](#) on page 12.

3

print from a camera

This HP psc supports the PictBridge standard, which allows you to connect any PictBridge-compliant camera and print photos without using your computer. Check your camera's user guide to see if it supports PictBridge capability.

This section contains the following topics:

- **connect a camera** on page 17
- **print photos from your camera** on page 17

connect a camera

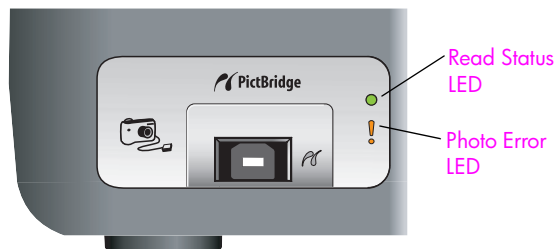
After you take photos with your PictBridge-compliant camera, you can print them immediately. We recommend you connect your camera's power cable to the camera to conserve battery power.

1 Turn on your camera and be sure it is in PictBridge mode. Refer to your camera's user guide.

2 Connect the PictBridge-compliant camera to the front USB port of the HP PSC by using the USB cable that came with your camera.

When the camera is connected correctly, the Read Status LED is illuminated. The Read Status LED next to the card slots blinks green when printing from the camera.

If the camera is not PictBridge-compliant or is not in PictBridge mode, the Photo Error LED blinks amber. Disconnect the camera, correct the problem on the camera and reconnect.



print photos from your camera

After you successfully connect your PictBridge-compliant camera to the HP PSC, you can print your photos. Print functionality is managed by the camera settings, if any. Refer to your camera's user guide for more information.

If your camera does not allow you to make settings, your HP PSC uses the following default settings:

- Paper type is set to photo paper. Use letter or A4, or 4 by 6 inch (10 by 15 cm) tabbed photo paper when printing from the PictBridge port.
- Paper size is detected by the HP PSC.
- Number of images printed on each page is 1.

Refer to your camera's user guide for more information.

4

use the copy features

The HP psc enables you to produce high-quality color and black-and-white copies on plain paper. You can enlarge or reduce the size of an original to fit a specific paper size, including 4 by 6 inch (10 by 15 cm) photo paper.

This section contains the following topics:

- **make copies** on page 19
- **perform special copy jobs** on page 20
- **stop copying** on page 22

make copies

You can make copies by using the front panel of your HP psc or by using the HP Director software on your computer. Copy features are available through either method. However, the software offers additional copy features that are not available from the front panel.

All copy settings that you select on the front panel are reset *two minutes* after the HP psc completes the copy.

This section contains the following topics:

- **make a copy** on page 19
- **adjust copy speed or quality** on page 20
- **set the number of copies** on page 20

make a copy

- 1 Load your original face down on the left front corner of the glass.
If you are copying a photo, position the photo on the glass so the long edge of the photo is along the front edge of the glass. For more information, see **load originals** on page 11.
- 2 Press **Start Copy, Black** or **Start Copy, Color**.
The HP psc makes an exact copy of your original using Best quality mode.

Tip: You can also use the Paper Type and Scan buttons to make Fast draft-quality copies or you can use the Size button to reduce or enlarge an original to fit a specific paper size.

For more information on these options, see the following topics:

- **adjust copy speed or quality** on page 20
- **reduce or enlarge an original to fit the paper loaded** on page 21

adjust copy speed or quality

The HP psc automatically copies in Best mode. This produces the highest quality copies for all paper. However, you can manually override this setting to copy in Fast mode. This produces copies more quickly and saves ink. The text is of comparable quality to copies produced using Best mode, but the graphics might be of lower quality.

to make a copy from the front panel using the fast setting

- 1 Load your original face down on the left front corner of the glass.
- 2 Press the **Paper Type** button to select **Plain**.

Note: In order to make a copy using Fast mode, you must select Plain as the Paper Type. If the Paper Type is set to Photo, the HP psc will always copy in Best mode.
- 3 Press and hold down the **Scan** button, and then press **Start Copy, Black** or **Start Copy, Color**.

set the number of copies

- 1 Load your original face down on the left front corner of the glass.
- 2 Press **Copies** to increase the number of copies, up to a maximum of 9, and then press **Start Copy, Black** or **Start Copy, Color**.

perform special copy jobs

In addition to standard copying, your HP psc can copy photos and automatically enlarge or reduce your original to fit a specific paper size.

This section contains the following topics:

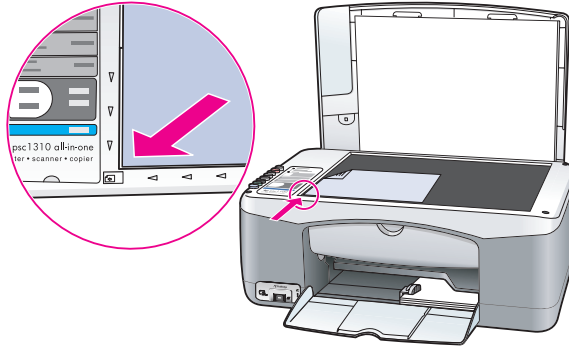
- **make a 4 by 6 inch (10 by 15 cm) borderless copy of a photo** on page 20
- **reduce or enlarge an original to fit the paper loaded** on page 21

For information on copy options that are available in the HP Director, see the onscreen **hp image zone help** that came with your software.

make a 4 by 6 inch (10 by 15 cm) borderless copy of a photo

For the best quality when copying a photo, load photo paper in the paper tray, and then use the Paper Type button to select Photo. You might also want to use the photo print cartridge for superior print quality. With the tri-color and photo print cartridges installed, you have a six-ink system. See **use a photo print cartridge** on page 36 for more information.

- 1 Load your original photo face down on the left front corner of the glass. Position the photo on the glass so the long edge of the photo is along the front edge of the glass.

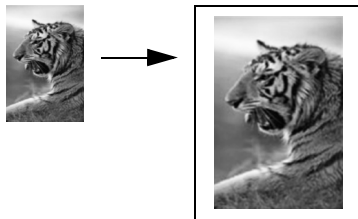


- 2 Load 4 by 6 inch (10 by 15 cm) tabbed photo paper print side down in the paper tray, with the tab facing out towards you.
- 3 If your original is not 4 by 6 inches (10 by 15 cm), press the **Size** button to select **Fit to Page**.
The HP psc will resize the original to 4 by 6 inches (10 by 15 cm) to create a borderless copy.
- 4 Press the **Paper Type** button to select **Photo**.
This tells the HP psc that you have photo paper loaded in the paper tray. When printing onto photo paper, the HP psc automatically copies your original in Best quality mode.
- 5 Press **Start Copy, Black** or **Start Copy, Color**.

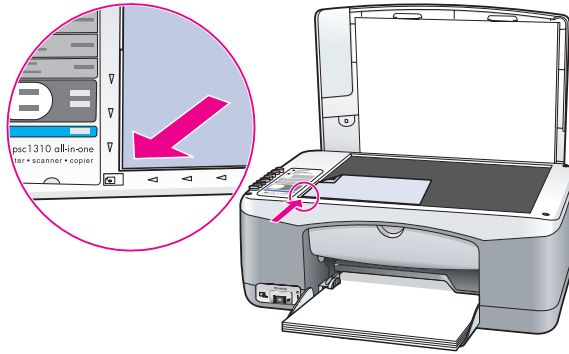
reduce or enlarge an original to fit the paper loaded

Use Fit to Page when you want to automatically enlarge or reduce your original to fill the printable area of the paper size loaded in the paper tray.

For example, you can use Fit to Page to enlarge a small photo to fit within the margins of a full-size page (as shown below), reduce an original to prevent unwanted cropping of text or images around the margins, or reduce or enlarge an original to create a borderless 4 by 6 inch (10 by 15 cm) photo.



- 1 Make sure that the glass and lid backing are clean.
- 2 Load your original face down on the left front corner of the glass.
If you are copying a photo, position the photo on the glass so the long edge of the photo is along the front edge of the glass, as shown below.



- 3 Press the **Size** button to select **Fit to Page**.
- 4 Press **Start Copy, Black** or **Start Copy, Color**.

stop copying

- ▶ To stop copying, press **Cancel** on the front panel.
The HP psc immediately stops printing and releases the paper.

5

use the scan features

Scanning is the process of converting pictures and text into an electronic format for your computer. You can scan photos and text documents.

Because the scanned image or text is in an electronic format, you can bring it into your word processor or graphics software program and modify it to suit your needs. You can do the following:

- Scan photos of your kids and e-mail them to relatives, create a photographic inventory of your house or office, or create an electronic scrapbook.
- Scan text from an article into your word processor and quote it in a report, saving you a lot of retyping.

To use the scan features, your HP psc and computer must be connected and turned on. The HP psc software must also be installed and running on your computer prior to scanning. To verify that the HP psc software is running on a Windows PC, look for the hp psc 1310 series icon in the system tray at the lower right side of your screen, next to the time. On a Macintosh, the HP psc software is always running.

You can start a scan from your computer or from your HP psc. This section explains how to scan from the front panel of the HP psc only.

For information about how to scan from the computer, and how to adjust, resize, rotate, crop, and sharpen your scans, see the onscreen **hp image zone help** that came with your software.

Note: Bright direct sunlight on your HP PSC, or halogen desk lamps placed close to your HP PSC, might affect the quality of scanned images.

Note: High resolution scanning (600 dpi or higher) requires a large amount of hard disk space. If there is not enough hard disk space available, your system might stall.

This section contains the following topics:

- **scan an original** on page 23
- **stop scanning** on page 24

scan an original

- 1 Load your original face down in the left front corner of the glass.
- 2 Press **Scan**.

A preview image of the scan appears in the HP Scan window on the computer, where you can edit it.

For more information about editing a preview image, see the onscreen **hp image zone help** that came with your software.

- 3 Make any edits to the preview image in the **HP Scan** window. When you have finished, click **Accept**.

The HP psc sends the scan to the HP Gallery, which automatically opens and displays the image.

The HP Gallery has many tools that you can use to edit your scanned image. You can improve the overall image quality by adjusting the brightness, sharpness, color tone, or saturation. You can also crop, straighten, rotate, or resize the image.

When the scanned image looks just the way you want it, you can open it in another application, send it via e-mail, save it to a file, or print it. For more information about using the HP Gallery, see the onscreen **hp image zone help** that came with your software.

stop scanning

- ▶ To stop scanning, press **Cancel** on the front panel.

6

order supplies

You can order print cartridges, recommended types of HP paper, and HP psc accessories online from the HP website.

This section contains the following topics:

- **order media** on page 25
- **order print cartridges** on page 25
- **order other supplies** on page 25

order media

To order media such as HP Premium Paper, HP Premium Inkjet Transparency Film, HP Iron-On Paper, or HP Greeting Cards, go to:

www.hp.com

Choose your country/region, and then select Buy or Shopping.

order print cartridges

The following table lists the print cartridges that are compatible with your HP psc. Use this information to determine which print cartridge to order.

print cartridges	hp reorder number
HP 27 black inkjet print cartridge, 10 ml	C8727AN
HP 28 tri-color inkjet print cartridge, 8 ml	C8728AN
HP 56 black inkjet print cartridge, 19 ml	C8756AN
HP 57 tri-color inkjet print cartridge, 17 ml	C8757AN
HP 58 photo inkjet print cartridge, 17 ml	C8758AN

Get more information about print cartridges from the HP website:

www.hp.com

Choose your country/region, and then select Buy or Shopping.

order other supplies

To order other supplies such as HP psc software, a copy of the printed User Guide, a Setup Poster, or other customer-replaceable parts, call the appropriate number.

- In the U.S. or Canada, dial 1-800-HP-INVENT (1-800-474-6836).
- In Europe, dial +49 180 5 290220 (Germany) or +44 870 606 9081 (U.K.).

To order HP psc software in other countries/regions, call the phone number for your countries/regions. The numbers listed below are current as of the publication date of this guide. For a list of current ordering numbers, go to the following website and choose your own country/region or language:

www.hp.com/support

country/region	number for ordering
Asia Pacific	65 272 5300
Australia	61 3 8877 8000
New Zealand	0800 441 147
South Africa	+27 (0)11 8061030
U.S. and Canada	1-800-HP-INVENT (1-800-474-6836)

7

maintain your hp psc

The HP psc requires little maintenance. Sometimes you might want to clean the glass and lid backing to remove surface dust and ensure that your copies and scans remain clear. You might also want to replace, align, or clean your print cartridges from time to time. This section provides instructions for keeping your HP psc in top working condition. Perform these simple maintenance procedures as necessary.

This section contains the following topics:

- **clean the glass** on page 27
- **clean the lid backing** on page 27
- **clean the exterior** on page 28
- **work with print cartridges** on page 28
- **self-maintenance sounds** on page 36

clean the glass

Dirty glass from fingerprints, smudges, hair, and so on slows down performance and affects the accuracy of features such as Fit to Page.

- 1 Turn off the HP psc, unplug the power cord, and raise the lid.
- 2 Clean the glass with a soft cloth or sponge slightly moistened with a nonabrasive glass cleaner.

Caution! Do not use abrasives, acetone, benzene, or carbon tetrachloride on the glass; these can damage it. Do not place or spray liquids directly on the glass. They might seep under it and damage the HP psc.

- 3 Dry the glass with a chamois or cellulose sponge to prevent spotting.

clean the lid backing

Minor debris can accumulate on the white document backing located underneath the lid of the HP psc. This can cause problems during scan or copy tasks.

- 1 Turn off the HP psc, unplug the power cord, and raise the lid.
- 2 Clean the white document backing with a soft cloth or sponge slightly moistened with a mild soap and warm water.
- 3 Wash the backing gently to loosen debris; do not scrub the backing.

- 4 Dry the backing with a chamois or soft cloth.
Caution! Do not use paper-based wipes as these might scratch the backing.
- 5 If this does not clean the backing well enough, repeat the previous steps using isopropyl (rubbing) alcohol, and wipe the backing thoroughly with a damp cloth to remove any residual alcohol.

clean the exterior

Use a soft cloth or slightly moistened sponge to wipe dust, smudges, and stains off the case. The interior of the HP psc does not require cleaning. Keep fluids away from the interior of the HP psc as well as the front panel.

work with print cartridges

To ensure the best print quality from your HP psc, you will need to perform some simple maintenance procedures.

This section contains the following topics:

- **check the ink levels** on page 28
- **print a self-test report** on page 29
- **handle print cartridges** on page 29
- **replace the print cartridges** on page 30
- **use a photo print cartridge** on page 32
- **use a print cartridge protector** on page 32
- **align the print cartridges** on page 33
- **clean the print cartridge contacts** on page 35

check the ink levels

You can easily check the ink supply level to determine how soon you might need to replace a print cartridge. The ink level supply shows an approximation of the amount of ink remaining in the print cartridges. Checking the ink levels can only be done from the HP Director.

to check the ink level for Windows users

- 1 From the **HP Director**, choose **Settings**, choose **Print Settings**, and then choose **Printer Toolbox**.
- 2 Click the **Estimated Ink Levels** tab.
The estimated ink levels appear for the print cartridges.

to check the ink level for Macintosh users

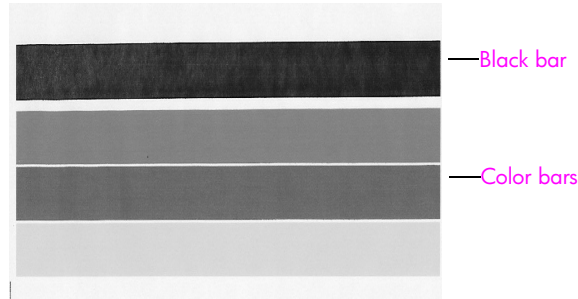
- 1 From the **HP Director**, choose **Settings**, and then choose **Maintain Printer**.
- 2 If the **Select Printer** dialog box opens, select your HP psc, and then click **Utilities**.
- 3 From the list, select **Ink Level**.
The estimated ink levels appear for the print cartridges.

print a self-test report

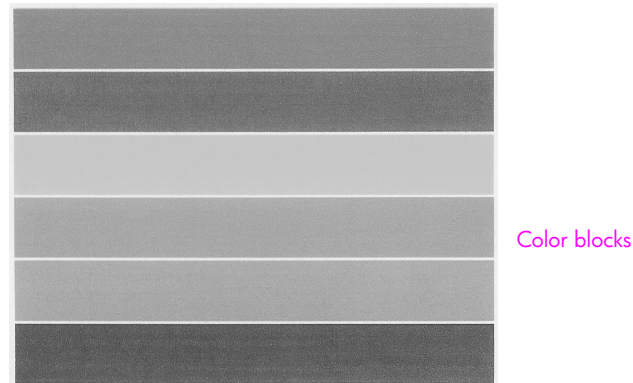
If you are experiencing problems with printing, print a Self-Test Report before you replace the print cartridges.

- 1 Press and hold down **Cancel**.
- 2 Press **Start Copy, Color**.

The HP psc prints a Self-Test Report, which might indicate the source of any problems you might be having.



Black and tri-color cartridges installed



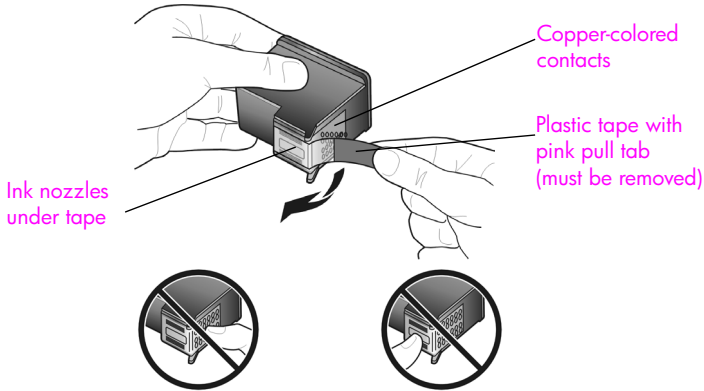
Tri-color and photo cartridge installed

- 3 Check the color blocks for streaking or white lines.
 - Missing color blocks might indicate that the tri-color print cartridge is out of ink. You might need to clean or replace your print cartridges.
 - Streaks might indicate clogged nozzles or dirty contacts. You might need to clean the print cartridges. Do *not* clean with alcohol.

For information on replacing ink cartridges, see [replace the print cartridges](#) on page 30 and for information on cleaning print cartridges, see [clean the print cartridge contacts](#) on page 35.

handle print cartridges

Before you replace a print cartridge, you should know the part names and how to handle the print cartridge.



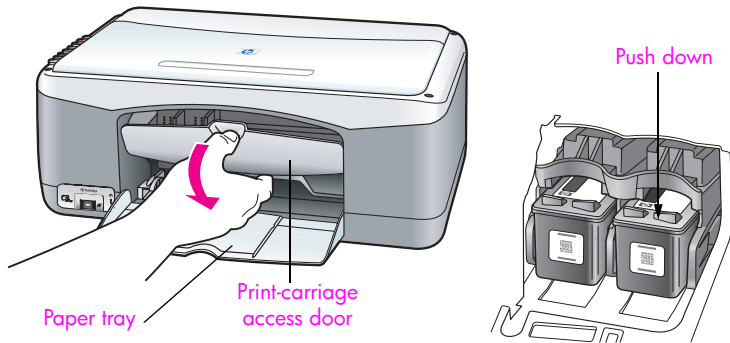
Do not touch the copper-colored contacts or the ink nozzles

replace the print cartridges

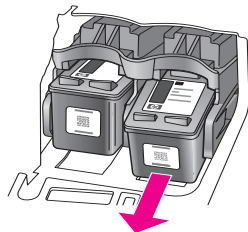
The HP psc notifies you when you need to replace your print cartridges. Replace the print cartridges when you see faded text or if you experience print quality issues related to the print cartridges.

For more information on ordering replacement print cartridges, see **order print cartridges** on page 25.

- 1 Turn on the HP psc and then lower the paper tray to access the print-carriage access door.
- 2 Open the print-carriage access door by lowering the handle. The print carriage moves to the center of the HP psc.

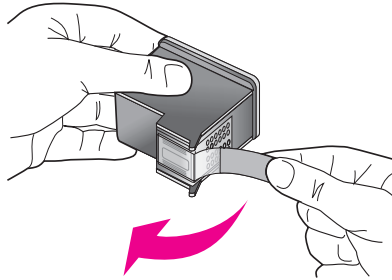


- 3 After the carriage stops moving, push down on the print cartridge to release it, and then pull it toward you out of its slot.



Note: It is normal to see ink buildup in the print cartridge slots.

- 4 Remove the new print cartridge from its packaging and, being careful to touch only the bright pink plastic tab, gently remove the plastic tape to uncover the ink nozzles.

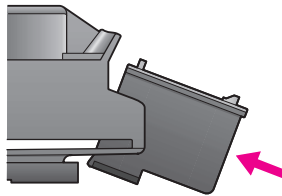


Caution! Do not touch the copper-colored contacts or ink nozzles.

After you have removed the plastic tape, install the print cartridge immediately to prevent the ink from drying in the nozzles.

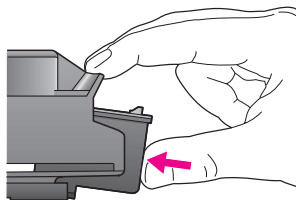
- 5 Hold the black print cartridge with the HP label on top. Slide the print cartridge at a slight angle into the *right* side of the print carriage. Press firmly until the print cartridge snaps into place.

Caution! Do not attempt to push the cartridge straight into the slot. It must slide in at a slight angle.

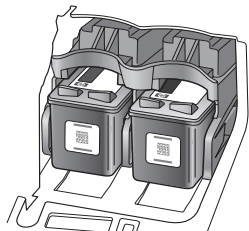


- 6 Hold the tri-color print cartridge with the HP label on top. Slide the print cartridge at a slight angle into the *left* side of the print carriage. Press firmly until the print cartridge snaps into place.

Caution! Do not attempt to push the cartridge straight into the slot. It must slide in at a slight angle.



Note: You must install *both* print cartridges in order for your HP psc to work.



You can also refer to the label that is located on the inside of the print-carriage access door for information on installing the print cartridges.

- 7 Close the print-carriage access door. Within a few minutes, a print cartridge alignment page prints. You will need to align the print cartridges. For information on aligning the print cartridges, see [align the print cartridges](#) on page 33.

use a photo print cartridge

You can optimize the quality of the photos you print with your HP psc by purchasing a photo print cartridge. Remove the black print cartridge and insert the photo print cartridge in its place. With the tri-color print cartridge and photo print cartridge installed, you have a six-ink system, which provides enhanced quality photos. When you want to print regular text documents, swap the black print cartridge back in. Use a print cartridge protector to keep your print cartridge secure when it is not being used. For more information on using the print cartridge protector, see [use a print cartridge protector](#) on page 32 and for more information on replacing print cartridges, see [replace the print cartridges](#) on page 30.

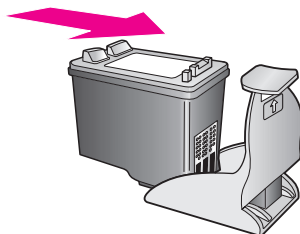
For more information on purchasing a photo print cartridge, see [order print cartridges](#) on page 25.

use a print cartridge protector

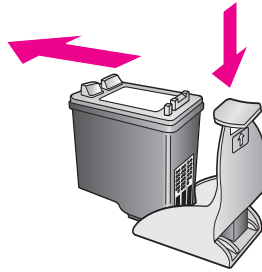
When you purchase a photo print cartridge, you will receive a print cartridge protector.

The print cartridge protector is designed to keep your print cartridge secure when it is not being used. It also prevents the ink from drying out. Whenever you remove a print cartridge from the HP psc, store it in the print cartridge protector.

- ▶ To insert a print cartridge into the print cartridge protector, slide the print cartridge into the print cartridge protector at a slight angle and snap it securely into place.



- ▶ To remove the print cartridge from the print cartridge protector, press down and back on the top of the print cartridge protector to release the print cartridge, then slide the print cartridge out of the print cartridge protector.

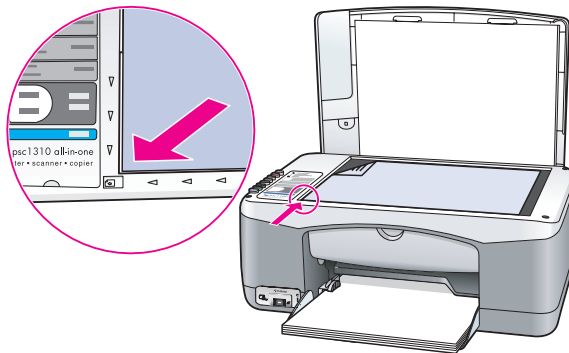


align the print cartridges

After you install or replace a print cartridge, the HP psc automatically prints a print cartridge alignment sheet. This might take a few moments. You can also align the print cartridges at any time from the HP Director. For information on accessing the HP Director, see [use your hp psc with a computer](#) on page 6. Aligning the print cartridges ensures high-quality output.

to align the print cartridges after installing a new print cartridge

- 1 Place the print cartridge alignment sheet face down on the left front corner of the glass. Make sure the top of the sheet is on the left side as shown below.



- 2 Press **Scan**.

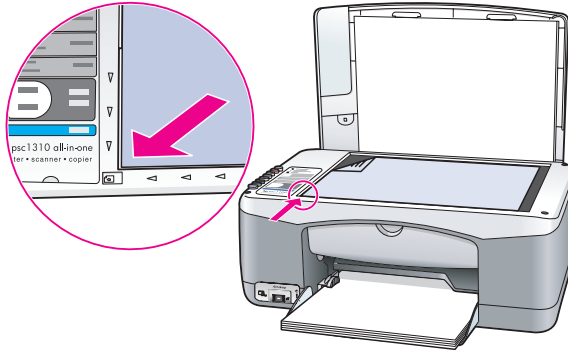
The HP psc aligns the print cartridges.

Note: During alignment the button LED blinks until the procedure is finished. This takes about 30 seconds.

to align the print cartridges from the hp director for Windows users

- 1 From the **HP Director**, choose **Settings**, choose **Print Settings**, and then choose **Printer Toolbox**.
- 2 Click the **Device Services** tab.
- 3 Click **Align the Print Cartridges**.
A print cartridge alignment sheet is printed.

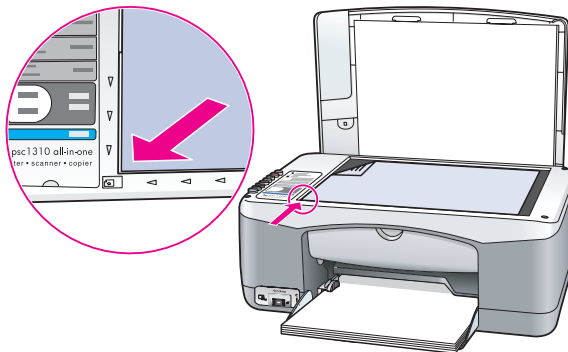
- Place the print cartridge alignment sheet face down on the left front corner of the glass. Make sure the top of the sheet is on the left side as shown below.



- Press **Scan**.
The HP psc aligns the print cartridges.
Note: During alignment the button LED blinks until the procedure is finished. This takes about 30 seconds.

to align the print cartridges from the hp director for Macintosh users

- From the **HP Director**, choose **Settings**, and then choose **Maintain Printer**.
- If the **Select Printer** dialog box opens, select your HP psc, and then click **Utilities**.
- From the list, select **Calibrate**.
- Click **Align**.
The HP psc prints a print cartridge alignment sheet. This might take a few moments.
- Place the print cartridge alignment sheet face down on the left front corner of the glass. Make sure the top of the sheet is on the left side.



- Press **Scan**.
The HP psc aligns the print cartridges.
Note: During alignment the button LED blinks until the procedure is finished. This takes about 30 seconds.

clean the print cartridge contacts

Clean the print cartridge contacts only if the Self-Test Report shows streaks.

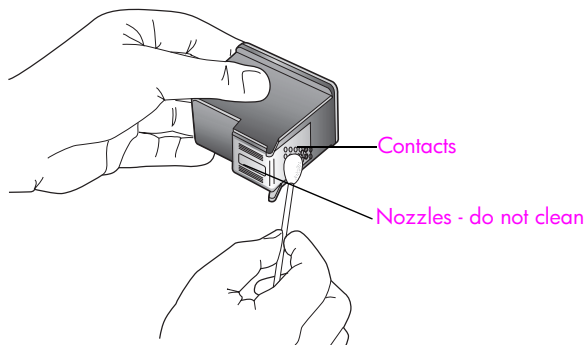
Caution! Do not remove both print cartridges at the same time. Remove and clean each print cartridge one at a time.

Make sure you have the following materials available:

- Dry foam rubber swabs, lint-free cloth, or any soft material that will not come apart or leave fibers.
- Distilled, filtered, or bottled water (tap water might contain contaminants that can damage the print cartridges).

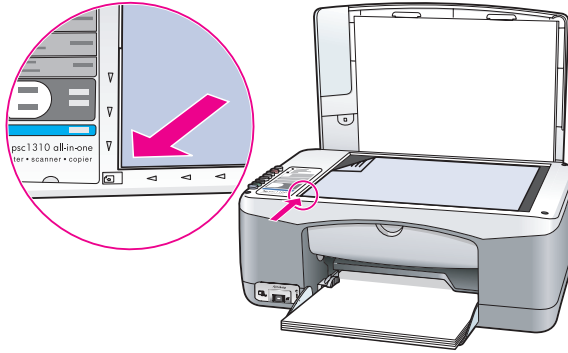
Caution! Do *not* use platen cleaners or alcohol to clean the print cartridge contacts. These can damage the print cartridge or the HP psc.

- 1 Turn the HP psc on and open the print-carriage access door. The print carriage moves to the center.
- 2 After the print carriage has moved to the center, unplug the power cord from the back of the HP psc.
- 3 Push down on the print cartridge to release it, and then pull it out of its slot.
- 4 Inspect the print cartridge contacts for ink and debris buildup.
- 5 Dip a clean foam rubber swab or lint-free cloth into distilled water, and squeeze any excess water from it.
- 6 Hold the print cartridge by its sides.
- 7 Clean only the contacts. Do *not* clean the nozzles.



- 8 Place the print cartridge back into the holder.
- 9 Repeat if necessary for the other print cartridge.
- 10 Close the door and plug in the HP psc. Because you removed a print cartridge from its holder, the HP psc automatically prints a print cartridge alignment sheet.

- 11 Place the print cartridge alignment sheet face down on the left front corner of the glass. Make sure the top of the sheet is on the left side as shown below.



- 12 Press **Scan**.
The HP psc aligns the print cartridges.
Note: During alignment the button LED blinks until the procedure completes. This takes about 30 seconds.

self-maintenance sounds

During the life of your product you might hear various mechanical sounds. This is a normal part of your device's self-maintenance.

Hewlett-Packard provides Internet and phone support for your HP psc.

This section contains the following topics:

- **get support and other information from the Internet** on page 37
- **hp customer support** on page 37
- **prepare your hp psc for shipment** on page 41
- **hp distribution center** on page 43

If you are unable to find the answer you need in the printed or onscreen documentation supplied with your product, you can contact one of the HP support services listed in the following sections. Some support services are available only in the U.S. and Canada, while others are available in many countries/regions worldwide. If a support service number is not listed for your country/region, contact your nearest authorized HP dealer for help.

get support and other information from the Internet

If you have Internet access, you can get more information from the HP website at:

www.hp.com/support

This website offers technical support, drivers, supplies, and ordering information.

hp customer support

Software programs from other companies might be included with your HP psc. If you experience problems with any of those programs, you will receive the best technical assistance by calling the experts at that company.

If you need to contact HP Customer Support, do the following before you call.

- 1 Make sure that:
 - a. Your HP psc is plugged in and turned on.
 - b. The specified print cartridges are installed correctly.
 - c. The recommended paper is properly loaded in the paper tray.
- 2 Reset your HP psc:
 - a. Turn off the HP psc by using the **On/Resume** button located on the front panel.
 - b. Unplug the power cord from the back of the HP psc.
 - c. Plug the power cord back into the device.
 - d. Turn on the HP psc by using the **On/Resume** button.
- 3 For more information, go to the HP website at:
www.hp.com/support
- 4 If you are still experiencing problems and need to speak with an HP Customer Support Representative:
 - Have the specific name of your HP psc, as it appears on the device, available.
 - Have your serial number and service ID ready. To view your serial number and service ID, print a Self-Test Report, which contains this information. To print a Self-Test Report, press and hold the **Cancel** button, and then press the **Start Copy, Color** button.
 - Be prepared to describe your problem in detail.
- 5 Call HP Customer Support. Be near your HP psc when you call.

call in North America during warranty

Call 1-800-HP-INVENT. US phone support is available in both English and Spanish languages 24 hours a day, 7 days a week (days and hours of support might change without notice). This service is free during the warranty period. A fee might apply outside the warranty period.

call hp Japan customer support

カスタマケアセンタ 連絡先

TEL : 0570-000511 (携帯電話・PHS からは: 03-3335-9800)
FAX : 03-3335-8338

- ・電話番号受付時間: 平日 9:00 ~ 17:00
土曜日 / 日曜日 10:00 ~ 17:00
(祝祭日、1月1日~3日を除く)

- ・FAX によるお問い合わせは、ご質問内容とともに、ご連絡先、弊社製品名、接続コンピュータ名をご記入ください。

call hp Korea customer support

HP 한국 고객 지원 문의

고객 지원 센터 대표 전화

1588-3003

제품가격 및 구입처 정보 문의 전화

080-703-0700

- * 전화 상담 가능 시간 : 평일 09:00~18:00
토요일 9:00~13:00
(일요일, 공휴일 제외)

support process for Western Europe

The HP support process works most effectively when looking for help in the following order:

- 1 Use **troubleshooting information** on page 59 to search for a solution.
- 2 Visit www.hp.com/support to:
 - Check for software updates
 - Access online support pages
 - Send HP an email message for answers to your questions.

Web and email support are available in the following languages:

- Dutch
- English
- French
- German
- Italian
- Portuguese
- Spanish
- Swedish

For all other languages, support information is available in English.

3 Contact your local HP dealer.

If your HP psc has a hardware failure, take it to your local HP dealer for a solution. Service is free during the limited warranty period. After the warranty period, you will be quoted a service charge.

4 Call HP support.

To find the telephone number for your country/region, please go to www.hp.com/support and choose your country/region and language.

support process for Eastern Europe, Middle East, and Africa

Follow these steps to troubleshoot the HP psc:

1 Use **troubleshooting information** on page 59 to search for a solution.

2 Visit www.hp.com/support to:

- Check for software updates
- Access online support pages
- Send HP an email message for answers to your questions.

Web and email support are available in the following languages:

- Dutch
- English
- French
- German
- Italian
- Portuguese
- Spanish
- Swedish

For all other languages, support information is available in English.

3 Call HP support.

See the table of support information in **call elsewhere in the world** on page 39.

call elsewhere in the world

The numbers listed below are current as of the publication date of this guide. For a list of current international HP Support Service numbers, go to the following website and choose your own country/region or language:

www.hp.com/support

You can call the HP support center in the following countries/regions. If your country/region is not listed, contact your local dealer or nearest HP Sales and Support Office to find out how to obtain services.

Support service is free during the warranty period; however, your standard long-distance phone charges will apply. In some cases, a flat fee per single incident will also apply.

For phone support in Europe, please check for the details and conditions of phone support in your country/region. Go to the following website:

www.hp.com/support

Alternatively, you can ask your dealer or call HP at the phone number provided in this booklet.

As part of our constant efforts to improve our phone support service, we advise you to check our website on a regular basis for new information regarding service features and delivery.

country/region	hp technical support	country/region	hp technical support
Algeria*	61 56 45 43	Malaysia	1-800-805405
Argentina	(54)11-4778-8380 0-810-555-5520	Mexico	01-800-472-6684
Australia	+61 3 8877 8000 1902 910 910	Mexico (Mexico City)	(55)5258-9922
Austria	www.hp.com/support	Morocco*	22 4047 47
Bahrain (Dubai)	800 171	Netherlands	www.hp.com/support
Belgium (Dutch) Belgium (French)	www.hp.com/support	New Zealand	0800 441 147
Bolivia	800-100247	Norway	www.hp.com/support
Brazil (Grande São Paulo)	(11) 3747 7799	Oman	+971 4 883 8454
Brazil (Demais Localidades)	0800 157751	Palestine	+971 4 883 8454
Canada during warranty	(905) 206 4663	Panama	001-800-7112884
Canada post-warranty (per-call charge)	1-877-621-4722	Peru	0-800-10111
Caribbean & Central America	1-800-711-2884	Philippines	632-867-3551
Chile	800-360-999	Poland	22 5666 000
China	86-21-38814518 8008206616	Portugal	www.hp.com/support
Colombia	01-800-114-726	Puerto Rico	1-877-232-0589
Costa Rica	0-800-011-0524	Qatar	+971 4 883 8454
Czech Republic	261307310	Republica Dominicana	1-800-7112884
Denmark	www.hp.com/support	Romania	21 315 4442
Ecuador (Andinatel)	999119+1-800-7112884	Russia, Moscow	095 7973520
Ecuador (Pacifitel)	1-800-225528+1-800-7112884	Russia, St. Petersburg	812 3467997
Egypt	2 532 5222	Saudi Arabia	800 897 1444
Finland	www.hp.com/support	Singapore	(65) 272-5300
France	www.hp.com/support	Slovakia	2 50222444
Germany	www.hp.com/support	South Africa (RSA)	086 0001030

country/region	hp technical support	country/region	hp technical support
Greece	801 11 22 55 47	South Africa, Outside Republic	+27 11 258 9301
Greece, Outside Greece	+30 210 6073603	Spain	www.hp.com/support
Greece (Cyprus)	800 9 2649	Sweden	www.hp.com/support
Guatemala	1800-995-5105	Switzerland	www.hp.com/support
Hong Kong	+85 (2) 3002 8555	Taiwan	+886-2-2717-0055 0800 010 055
Hungary	1 382 1111	Thailand	+66 (2) 661 4000
India	1-600-112267 91 11 682 6035	Trinidad & Tobago	1-800-7112884
Indonesia	62-21-350-3408	Tunisia*	71 89 12 22
Ireland	www.hp.com/support	Turkey	216 579 71 71
Israel	(0) 9 803 4848	Ukraine	(380 44) 4903520
Italy	www.hp.com/support	United Arab Emirates	800 4520
Jamaica	0-800-7112884	United Kingdom	www.hp.com/support
Japan	0570 000 511 +81 3 3335 9800	Venezuela	01-800-4746.8368
Jordan	+971 4 883 8454	Venezuela (Caracas)	(502) 207-8488
Korea	+82 1588 3003	Vietnam	84-8-823-4530
Kuwait	+971 4 883 8454	W. Africa (for countries not already listed)	+351 213 17 63 80
Lebanon	+971 4 883 8454	Yemen	+971 4 883 8454
Luxembourg (French) Luxembourg (German)	www.hp.com/support		

* This Call Center supports French-speaking customers from the following countries/regions: Morocco, Tunisia, and Algeria.

call in Australia post-warranty

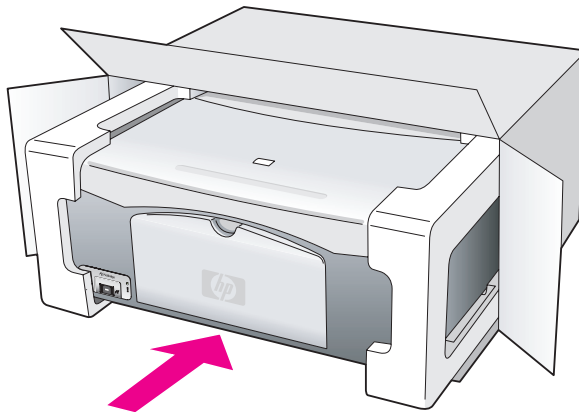
If your product is not under warranty, you can call 03 8877 8000. A per-incident, out-of-warranty support fee of \$27.50 (inc. GST) will be charged to your credit card. You can also call 1902 910 910 (\$27.50 charged to your phone account) from 9:00 A.M. to 5:00 P.M. Monday through Friday. Charges and support hours are subject to change without notice.

prepare your hp psc for shipment

If after contacting HP Customer Support or returning to the point of purchase, you are requested to send your HP psc in for service, please follow the power off and re-package steps below to avoid further damage to the device.

Note: When transporting your HP psc, make sure that the print cartridges have been removed, the HP psc has been properly shut down by pressing the On/Resume button, and you have allowed time for the print carriage to return to the home position and for the scanner to return to its parked position.

- 1 Turn on the HP psc.
Disregard steps 1 through 7 if your HP psc will not turn on. You will not be able to remove the print cartridges. Proceed to step 8.
- 2 Open the print-carriage access door.
The print carriage moves to the center of the HP psc.
- 3 Remove the print cartridges. See **replace the print cartridges** on page 30 for information on removing the print cartridges.
Caution! Remove both print cartridges. Failure to do so might damage your HP psc.
- 4 Place the print cartridges in an airtight bag so they will not dry out, and put them aside. Do not send them with the HP psc, unless instructed to by the HP customer support call agent.
- 5 Close the print-carriage access door.
- 6 Wait for the print carriage to park (stop moving) in the home position on the left side of the HP psc. This might take a few seconds.
- 7 Turn off the HP psc.
- 8 If available, pack the HP psc for shipment by using the original packing materials or the packaging materials that came with your exchange device.



If you do not have the original packaging materials, please use other adequate packaging materials. Shipping damage caused by improper packaging and/or improper transportation is not covered under the warranty.

- 9 Place the return shipping label on the outside of the box.
- 10 Include the following items in the box:
 - A brief description of symptoms for service personnel (samples of print quality problems are helpful).
 - A copy of the sales slip or other proof of purchase to establish the warranty coverage period.
 - Your name, address, and a phone number where you can be reached during the day.

hp distribution center

To order HP psc software, a copy of the printed User Guide, a Setup Poster, or other customer-replaceable parts, do one of the following:

- In the U.S. or Canada, call 1-800-HP-INVENT (1-800-474-6836).
- In Latin America, call the appropriate number for your country/region (see **call elsewhere in the world** on page 39).
- Outside of this country/region, go to this website:
www.hp.com/support

Your HP psc comes with a limited warranty that is described in this section. Information about how to obtain warranty service and how you can upgrade your standard factory warranty is also provided.

This section contains the following topics:

- **duration of limited warranty** on page 45
- **warranty service** on page 45
- **warranty upgrades** on page 45
- **returning your hp psc for service** on page 46
- **hewlett-packard limited global warranty statement** on page 46

duration of limited warranty

Duration of Limited Warranty (hardware and labor): 1 Year

Duration of Limited Warranty (CD media): 90 Days

Duration of Limited Warranty (print cartridges): Until the HP ink is depleted or the “end of warranty” date printed on the cartridge has been reached, whichever occurs first.

Note: The services described in the **express service** and **warranty upgrades** sections below might not be available in all locations.

warranty service

express service

To obtain HP express repair service, the customer must contact an HP service office or an HP Customer Support Center for basic troubleshooting first. See **hp customer support** on page 37 for steps to take before calling Customer Support.

If a customer device needs a minor part replacement and these parts can normally be replaced by the customer, the customer-replaceable components might be serviced through expedited part shipment. In this event, HP will prepay shipping charges, duty and taxes; provide telephone assistance on replacement of the component; and pay shipping charges, duty, and taxes for any part that HP asks to be returned.

The HP Customer Support Center might direct customers to designated authorized service providers who are certified by HP to service the HP product.

warranty upgrades

Upgrade your standard factory warranty to a total of three years with the HP SUPPORTPACK. Service coverage begins on product purchase date and the pack must be purchased within the first 180 days after product purchase. If during your technical support call it is determined that you need a replacement product, then HP will ship you this product next business day free of charge. Available in U.S. only.

For more information, please call 1-888-999-4747 or visit the HP website:

www.hp.com/go/hpsupportpack

Outside the U.S., please call your local HP Customer Support office. See [call elsewhere in the world](#) on page 39 for a list of international Customer Support numbers.

returning your hp psc for service

Before returning your HP PSC for service, you must call HP Customer Support. See [hp customer support](#) on page 37 for steps to take before calling Customer Support.

hewlett-packard limited global warranty statement

extent of limited warranty

Hewlett-Packard (“HP”) warrants to the end-user customer (“Customer”) that each HP PSC product (“Product”), including related software, accessories, media, and supplies, shall be free from defects in material and workmanship for the duration, which begins on the date of purchase by the Customer.

For each software Product, HP’s limited warranty applies only to a failure to execute programming instructions. HP does not warrant that the operation of any Product shall be uninterrupted or error free.

HP’s limited warranty covers only those defects which arise as a result of normal use of a Product, and does not cover any other problems, including those which arise as a result of (a) improper maintenance or modification, (b) software, accessories, media, or supplies not provided or supported by HP, or (c) operation outside the Product’s specifications.

For any hardware Product, the use of a non-HP print cartridge or a refilled print cartridge does not affect either the warranty to the Customer or any HP support contract with the Customer. However, if Product failure or damage is attributable to the use of a non-HP or refilled print cartridge, HP shall charge its standard labor and materials charges to service the Product for the failure or damage.

If HP receives, during the applicable warranty period, notice of a defect in any Product, HP shall either repair or replace the defective Product, at HP’s option. Where labor charges are not covered by HP’s limited warranty, repairs shall be at HP’s standard charges for labor.

If HP is unable to repair or replace, as applicable, a defective Product which is covered by HP’s warranty, HP shall, within a reasonable time after being notified of the defect, refund the purchase price for the Product.

HP shall have no obligation to repair, replace, or refund until the Customer returns the defective Product to HP.

Any replacement product may be either new or like-new, provided that it has functionality at least equal to that of the Product being replaced.

HP products, including each Product, may contain remanufactured parts, components, or materials equivalent to new in performance.

HP’s limited warranty for each Product is valid in any country/region or locality where HP has a support presence for the Product and where HP has marketed the Product. The level of warranty service may vary according to local standards. HP shall have no obligation to alter the form, fit, or function of the Product in order to make it operate in a country/region or locality for which the Product was never intended to operate.

limitations of warranty

TO THE EXTENT ALLOWED BY LOCAL LAW, NEITHER HP NOR ITS THIRD PARTY SUPPLIERS MAKE ANY OTHER WARRANTY OR CONDITION OF ANY KIND, WHETHER EXPRESS OR IMPLIED, WITH RESPECT TO THE COVERED HP PRODUCTS, AND

SPECIFICALLY DISCLAIM THE IMPLIED WARRANTIES OR CONDITIONS OF MERCHANTABILITY, SATISFACTORY QUALITY, AND FITNESS FOR A PARTICULAR PURPOSE.

limitations of liability

To the extent allowed by local law, the remedies provided in this Limited Warranty Statement are the Customer's sole and exclusive remedies.

TO THE EXTENT ALLOWED BY LOCAL LAW, EXCEPT FOR THE OBLIGATIONS SPECIFICALLY SET FORTH IN THIS LIMITED WARRANTY STATEMENT, IN NO EVENT SHALL HP OR ITS THIRD PARTY SUPPLIERS BE LIABLE FOR DIRECT, INDIRECT, SPECIAL, INCIDENTAL, OR CONSEQUENTIAL DAMAGES, WHETHER BASED ON CONTRACT, TORT, OR ANY OTHER LEGAL THEORY AND WHETHER ADVISED OF THE POSSIBILITY OF SUCH DAMAGES.

local law

This Limited Warranty Statement gives the Customer specific legal rights. The Customer may also have other rights which vary from state to state in the United States, from province to province in Canada, and from country/region to country/region elsewhere in the world.

To the extent this Limited Warranty Statement is inconsistent with local law, this Statement shall be deemed modified to be consistent with such local law. Under such local law, certain disclaimers and limitations of this Statement may not apply to the Customer. For example, some states in the United States, as well as some governments outside the United States (including provinces in Canada), may:

Preclude the disclaimers and limitations in this Statement from limiting the statutory rights of a consumer (e.g. the United Kingdom);

Otherwise restrict the ability of a manufacturer to enforce such disclaimers or limitations; or

Grant the Customer additional warranty rights, specify the duration of implied warranties which the manufacturer cannot disclaim, or not allow limitations on the duration of implied warranties.

FOR CONSUMER TRANSACTIONS IN AUSTRALIA AND NEW ZEALAND, THE TERMS IN THIS LIMITED WARRANTY STATEMENT, EXCEPT TO THE EXTENT LAWFULLY PERMITTED, DO NOT EXCLUDE, RESTRICT, OR MODIFY, AND ARE IN ADDITION TO, THE MANDATORY STATUTORY RIGHTS APPLICABLE TO THE SALE OF THE COVERED HP PRODUCTS TO SUCH CUSTOMERS.

The technical specifications for your HP psc are provided in this section. Also, international regulatory information for your HP psc is supplied in this section.

This section contains the following information:

- **paper specifications** on page 49
- **physical specifications** on page 50
- **power specifications** on page 50
- **physical specifications** on page 50
- **environmental specifications** on page 50
- **environmental product stewardship program** on page 50
- **regulatory notices** on page 51

paper specifications

paper-tray capacity

type	paper weight	quantity*
Plain paper	20 to 24 lb. (75 to 90 gsm)	100
Legal paper	20 to 24 lb. (75 to 90 gsm)	100
Cards	110 lb. index max (200 gsm)	20
Envelopes	20 to 24 lb. (75 to 90 gsm)	10
Transparency film	N/A	20
Labels	N/A	20
4 by 6 inch (10 by 15 cm) Photo	145 lb. (236 gsm)	20

* Maximum capacity

print margin specifications

	top (leading edge)	bottom (trailing edge)*	left	right
sheet paper or transparency film				
U.S. (Letter, Legal)	.06 inch (1.5 mm)	.50 inch (12.7 mm)	.25 inch (6.4 mm)	.25 inch (6.4 mm)
ISO (A4)	.07 inch (1.8 mm)	.50 inch (12.7 mm)	.13 inch (3.2 mm)	.13 inch (3.2 mm)
Envelopes	.13 inch (3.2 mm)	.13 inch (3.2 mm)	.25 inch (6.4 mm)	.50 inch (12.7 mm)
Cards	.07 inch (1.8 mm)	.46 inch (11.7 mm)	.13 inch (3.2 mm)	.13 inch (3.2 mm)

* The writing area is offset from center by .21 inches (5.4 mm), which causes asymmetric top and bottom margins.

physical specifications

- Height: 6.68 inch (16.97 cm)
- Width: 16.76 inch (42.57 cm)
- Depth: 10.20 inch (25.91 cm)
- Weight: 10 lb. (4.53 kg)

power specifications

- Power consumption: 80 W maximum
- Input Voltage: AC 100 to 240 V ~ 1 A 50–60 Hz, grounded
- Output Voltage: DC 32 V===940 mA, 16 V===625 mA

environmental specifications

- Recommended Operating Temperature Range: 15° to 32° C (59° to 90° F)
- Allowable Operating Temperature Range: 5° to 40° C (41° to 104° F)
- Humidity: 15% to 85% RH non-condensing
- Non-operating (Storage) Temperature Range: -4° to 60° C (-40° to 140° F)
- In the presence of high electromagnetic fields, it is possible the output from the HP psc might be slightly distorted
- HP recommends using a USB cable less than or equal to 3 m (10 feet) in length to minimize injected noise due to potential high electromagnetic fields

environmental product stewardship program

protecting the environment

Hewlett-Packard is committed to providing quality products in an environmentally sound manner. This product has been designed with several attributes to minimize impacts on our environment.

For more information, visit HP's Commitment to the Environment website at:

www.hp.com/hpinfo/globalcitizenship/environment/index.html

ozone production

This product generates no appreciable ozone gas (O₃).

energy consumption

Energy usage drops significantly while in ENERGY STAR[®] mode, which saves natural resources, and saves money without affecting the high performance of this product. This product qualifies for ENERGY STAR, which is a voluntary program established to encourage the development of energy-efficient office products.



ENERGY STAR is a U.S. registered service mark of the U.S. EPA. As an ENERGY STAR partner, HP has determined that this product meets ENERGY STAR guidelines for energy efficiency.

For more information on ENERGY STAR guidelines, see the following web site:

www.energystar.gov

paper use

This product is suited for the use of recycled paper according to DIN 19309.

plastics

Plastic parts over 25 grams are marked according to international standards that enhance the ability to identify plastics for recycling purposes at the end of the product's life.

material safety data sheets

Material safety data sheets (MSDS) can be obtained from the HP website at:

www.hp.com/go/msds

Customers without Internet access should contact their local HP Customer Support Center.

recycling program

HP offers an increasing number of product return and recycling programs in many countries, and partners with some of the largest electronic recycling centers throughout the world. HP also conserves resources by refurbishing and reselling some of its most popular products.

This HP product contains the following materials that might require special handling at end-of-life:

- Lead in solder

hp inkjet supplies recycling program

HP is committed to protecting the environment. The HP Inkjet Supplies Recycling Program is available in many countries/regions, and lets you recycle used print cartridges free of charge. For more information, see the following HP website:

www.hp.com/hpinfo/globalcitizenship/environment/recycle/inkjet.html

regulatory notices

The HP psc is designed to meet the regulatory requirements for your country/region.

regulatory model identification number

For regulatory identification purposes, your product is assigned a Regulatory Model Number. The Regulatory Model Number for your product is SDGOB-0319. This regulatory number should not be confused with the marketing name (HP PSC 1310 Series) or product numbers (Q5765A, Q5766A, Q5767A, Q5768A, Q5769A, Q5770A, Q5771A, Q5772A).

FCC statement

The United States Federal Communications Commission (in 47 CFR 15.105) has specified that the following notice be brought to the attention of users of this product.

Declaration of Conformity: This equipment has been tested and found to comply with the limits for a Class B digital device, pursuant to part 15 of the FCC Rules. Operation is subject to the following two conditions: (1) this device may not cause harmful interference, and (2) this device must accept any interference received, including interference that may cause undesired operation. Class B limits are designed to provide reasonable protection against harmful interference in a residential installation. This equipment generates, uses, and can radiate radio frequency energy, and, if not installed and used in accordance with the instructions, may cause harmful interference to radio communications. However, there is no guarantee that interference will not occur in a particular installation. If this equipment does cause harmful interference to radio or television reception, which can be determined by turning the equipment off and on, the user is encouraged to try to correct the interference by one or more of the following measures:

- Reorient the receiving antenna.
- Increase the separation between the equipment and the receiver.
- Connect the equipment into an outlet on a circuit different from that to which the receiver is connected.
- Consult the dealer or an experienced radio/TV technician for help.

Product Regulations Manager, Hewlett-Packard Company, San Diego, (858) 655-4100.

The user may find the following booklet prepared by the Federal Communications Commission helpful: How to Identify and Resolve Radio-TV Interference Problems. This booklet is available from the U.S. Government Printing Office, Washington DC, 20402. Stock No. 004-000-00345-4.

Caution! Pursuant to Part 15.21 of the FCC Rules, any changes or modifications to this equipment not expressly approved by the Hewlett-Packard Company may cause harmful interference and void the FCC authorization to operate this equipment.

note à l'attention des utilisateurs Canadien/notice to users in Canada

Le présent appareil numérique n'émet pas de bruit radioélectrique dépassant les limites applicables aux appareils numériques de la classe B prescrites dans le Règlement sur le brouillage radioélectrique édicté par le ministère des Communications du Canada.

This digital apparatus does not exceed the Class B limits for radio noise emissions from the digital apparatus set out in the Radio Interference Regulations of the Canadian Department of Communications.

notice to users in Australia

- ✔ This equipment complies with Australian EMC requirements

geräuschemission

$L_pA < 70$ dB
am Arbeitsplatz
im Normalbetrieb
nach DIN 45635 T. 19

notice to users in Japan (VCCI-2)

この装置は、情報処理装置等電波障害自主規制協議会（VCCI）の基準に基づくクラスB情報技術装置です。この装置は、家庭環境で使用することを目的としていますが、この装置がラジオやテレビジョン受信機に近接して使用されると受信障害を引き起こすことがあります。

取り扱い説明書に従って正しい取り扱いをして下さい。

notice to users in Korea

사용자 안내문 (B급 기기)

이 기기는 비업무용으로 전자파장애검정을 받은 기기로서, 주거지역에서는 물론 모든 지역에서 사용할 수 있습니다.

declaration of conformity (European Union)

The Declaration of Conformity in this document complies with ISO/IEC Guide 22 and EN45014. It identifies the product, manufacturer's name and address, and applicable specifications recognized in the European community.

declaration of conformity

According to ISO/IEC Guide 22 and EN 45014

Manufacturer's name and address:	
Hewlett-Packard Company, 16399 West Bernardo Drive, San Diego, CA 92127-1899, USA	
Regulatory model number:	SDGOB-0319
Declares that the product:	
Product name:	HP PSC 1310 Series (Q5763A)
Model number(s):	PSC 1315 (Q5765A), 1315xi (Q5766A), 1315v (Q5767A), 1311 (Q5768A), 1312 (Q5769A), PSC 1317 (Q5770A), 1315 (Q5771A), 1318 (Q5772A)
Power adapters:	0950-4466
Conforms to the following product specifications:	
Safety:	IEC 60950:1999 3rd Edition
	EN 60950:2000
	UL1950/CSA22.2 No.950, 3rd Edition:1995
	IEC 60825-1 Edition 1.2:2001 / EN 60825-1+A11+A2+A1: 2002 Class 1(Laser/Led)
	NOM 019-SFCI-1993, AZ / NZS 3260
	GB4943: 2001
EMC:	CISPR 22:1997 / EN 55022:1998, Class B
	CISPR 24:1997 / EN 55024:1998
	IEC 61000-3-2:1995 / EN 61000-3-2:1995
	IEC 61000-3-3:1994 / EN 61000-3-3:1995
	AS/NZS3548, CNS 13438: 1997, VCCI-2
	FCC Part 15 - Class B/ICES-003, Issue 2
	GB9254:1998
Supplementary Information:	
<p>The product herewith complies with the requirements of the Low Voltage Directive 73/23/EC, the EMC Directive 89/336/EC and carries the CE marking accordingly.</p> <ul style="list-style-type: none"> The product was tested in a typical configuration. 	
<p>European Contact for regulatory topics only: Hewlett Packard GmbH, HQ-TRE, Herrenberger Strasse 140, D-71034 Böblingen Germany. (FAX +49-7031-14-3143)</p> <p>US Contact: Hewlett Packard Co. 16399 W. Bernardo Dr. San Diego, CA, USA 92127</p>	

HP Instant Share makes it easy to send photos that family and friends can view. Just take a photo or scan an image, select the photograph or image, and use the software on your computer to forward the media to an e-mail destination. You can even upload your photos (depending on your country/region) to an online photo album, or an online photo finishing service.

With HP Instant Share, family and friends always get photos they can view—no more large downloads or images that are too big to open. An e-mail with thumbnail images of your photos is sent with a link to a secure Web page where your family and friends can easily view, share, print, and save your pictures.

Note: Some operating systems do not support HP Instant Share, but you can still use your HP Director software to send a photo to family and friends as an e-mail attachment. (For more information, see [send a photo or image using your hp psc \(Macintosh\)](#) on page 57.)

This section contains the following topics:

- [use hp instant share in five easy steps \(Windows\)](#) on page 55
- [send a photo or image using your hp psc \(Macintosh\)](#) on page 57
- [why should I register with hp instant share \(Windows\)?](#) on page 58

use hp instant share in five easy steps (Windows)

HP Instant Share is easy to use with your HP PSC 1310 Series (HP psc)—simply:

- 1 Determine which photo on your Windows-based computer you want to send.
OR

Scan an image using your HP psc and send it to the HP Image Zone software.

- 2 From the **HP Image Zone**, select the photograph or image you want to send.
- 3 From the **HP Instant Share** tab, click **Start HP Instant Share**.
- 4 Create an e-mail destination within HP Instant Share.

Note: You can also set up an Address Book to retain your e-mail addresses.

- 5 Send your e-mail message.

For specific information on how to use HP Instant Share, see the following procedures:

- [use a scanned image](#) on page 56
- [access hp instant share from the hp director](#) on page 56

Note: Your computer must be connected to the Internet to use HP Instant Share. If you are an AOL or CompuServe user, please connect to your Internet service provider before attempting to use HP Instant Share.

use a scanned image

For information on scanning an image, see [use the scan features](#) on page 23.

- 1 Load your original face down in the left front corner of the glass.
- 2 Press **Scan**.
A preview image of the scan appears in the HP Scan window on the computer, where you can edit it.
For more information about editing a preview image, see the onscreen [hp image zone help](#) that came with your software.
- 3 Make any needed edits to the preview image in the **HP Scan** window. When you have finished, click **Accept**.
The HP psc sends the scan to the HP Image Zone, which automatically opens and displays the image.
- 4 After you have edited the scanned image, select it.
Note: The HP Image Zone has many editing tools that you can use to edit your image and achieve the results you want. For more information, see the onscreen [hp image zone help](#) that came with your software.
- 5 Click the **HP Instant Share** tab.
- 6 To use HP Instant Share, go to step 5 in [access hp instant share from the hp director](#) on page 56.

access hp instant share from the hp director

This section addresses how to use the HP Instant Share e-mail service. The terms photo and image are both referred to as image in this section. For more information on using the HP Director, see the onscreen [hp image zone help](#) that came with your software.

- 1 Open the **HP Director**.
- 2 From the **HP Director**, click **HP Image Zone**.
The HP Image Zone appears.
- 3 Select an image from the folder in which it is stored.
Note: For more information, see the onscreen [hp image zone help](#) that came with your software.
- 4 Click the **HP Instant Share** tab.
- 5 In the **Control** area, click **Start HP Instant Share**.
The Go Online screen appears in the Work area.
- 6 Click **Next**.
The One-Time Setup—Region and Terms of Use screen appears.
- 7 Select your country/region from the drop-down list.
- 8 Read the **Terms of Service**, select the **I agree** check box, and click **Next**.
The Select an HP Instant Share Service screen appears.
- 9 Select **HP Instant Share E-mail**: send images through e-mail.
- 10 Click **Next**.
- 11 At the Create HP Instant Share E-Mail screen, complete the **To**, **From**, **Subject**, and **Message** fields.

Note: To open and maintain an e-mail address book, click Address Book, register with HP Instant Share, and obtain a HP Passport.

Note: To send your e-mail message to multiple addresses, click How to e-mail multiple people.

12 Click **Next**.

The Add Captions screen appears.

13 Enter a caption for your digital image, and then click **Next**.

Your image is uploaded to the HP Instant Share services website.

After the image is uploaded, the Photos E-mailed screen appears.

Your e-mail is sent with a link to a secure Web page that stores your image for 60 days.

14 Click **Finish**.

The HP Instant Share website opens in your browser.

From the website, you can select an image, and choose from a number of processing options.

send a photo or image using your hp psc (Macintosh)

If your HP psc is connected to a Macintosh, you can send a photo or image to anyone with an e-mail account. You can initiate your e-mail message from an e-mail application installed on your computer by pressing E-mail in the HP Gallery. You open the HP Gallery from the HP Director.

This section contains the following topics:

- **use a scanned image** on page 57
- **access the e-mail option from the hp director** on page 58

use a scanned image

For information on scanning an image, see **use the scan features** on page 23.

1 Load your original face down in the left front corner of the glass.

2 Press **Scan**.

A preview image of the scan appears in the HP Scan window on the computer, where you can edit it.

For more information about editing a preview image, see the onscreen **hp image zone help** that came with your software.

3 Make any needed edits to the preview image in the **HP Scan** window. When you have finished, click **Accept**.

The HP psc sends the scan to the HP Gallery, which automatically opens and displays the image.

4 After you have edited the scanned image, select it.

Note: The HP Gallery has many editing tools that you can use to edit your image and achieve the results you want. For more information, see the onscreen **hp image zone help** that came with your software.

5 Click **E-mail**.

The e-mail program on your Macintosh opens.

You can now send the images as an e-mail attachment by following the prompts on your Macintosh.

access the e-mail option from the hp director

For more information on using the HP Director, see the onscreen **hp image zone help** that came with your software.

- 1 Open the **HP Director** and click **HP Gallery** (OS 9).

OR

Click **HP Director** in the Dock, and select **HP Gallery** from the **Manage and Share** section of the **HP Director** menu (OS X).

The HP Gallery opens.

- 2 Select an image.

For more information, see the onscreen **hp image zone help** that came with your software.

- 3 Click **E-mail**.

The e-mail program on your Macintosh opens.

You can now send the images as an e-mail attachment by following the prompts on your Macintosh.

why should I register with hp instant share (Windows)?

With the HP PSC 1310 Series, HP Instant Share user registration is only required if you choose to use the Address Book. User registration is a separate log-on process from the HP product registration and is accomplished using the HP Passport setup program.

If you choose to save e-mail addresses and create distribution lists in a HP Instant Share Address Book, you will be prompted to register. Registration is required prior to configuring the Address Book and accessing the Address Book when addressing an HP Instant Share e-mail.

This section contains troubleshooting information for the HP PSC 1310 Series (HP psc). Specific information is provided for installation and configuration issues. References to our online troubleshooting help are provided for operational topics.

This section contains the following:

- **installation troubleshooting** on page 59
- **operational troubleshooting** on page 65

installation troubleshooting

Installation and configuration troubleshooting tips are included in this section for some of the most common issues associated with HP psc software and hardware installation, and HP Instant Share.

This section contains the following topics:

- **hardware and software installation troubleshooting** on page 59
- **hp instant share setup troubleshooting** on page 65

hardware and software installation troubleshooting

If you encounter a software or hardware problem during installation, see the topics below for a possible solution.

During a normal installation of the HP psc software, the following things occur:

- The HP psc CD-ROM runs automatically when the CD-ROM is inserted
- The software installs
- Files are copied to your hard drive
- You are requested to plug in the HP psc
- A green OK and check mark appear on an installation wizard screen
- You are requested to restart your computer (might not occur in all cases)
- The registration process runs

If any of these things do occur, there might be a problem with the installation. To check the installation on a PC, verify the following:

- Start the director and check to make sure the following icons appear: scan picture, scan document, and hp image zone. For information about starting HP Director, see **use your hp psc with a computer** on page 6. If the icons do not appear immediately, you might need to wait a few minutes for the HP psc to connect to your computer. Otherwise, see **Some of the icons are missing in the hp director** on page 62.
- Open the Printers dialog box and check to see that the HP psc is listed.
- Look at the task tray for an HP psc icon. This indicates that the HP psc is ready.



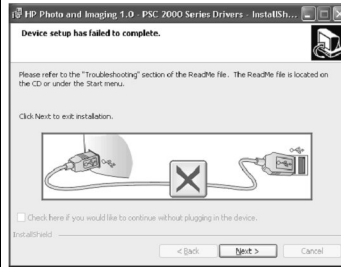
software installation troubleshooting

Use this section to solve any problems you might encounter while installing the HP psc software.

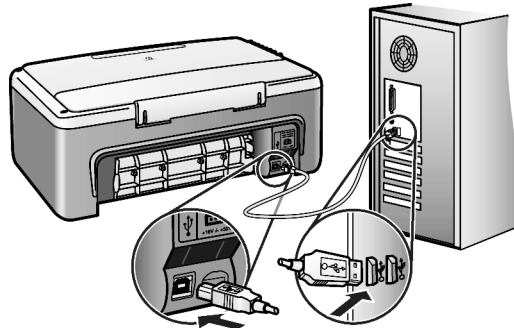
problem	possible cause and solution
When I insert the CD-ROM into my computer's CD-ROM drive, nothing happens	<p>follow these steps</p> <ol style="list-style-type: none"> 1 From the Windows Start menu, choose Run. 2 In the Run dialog box, enter d:\setup.exe (if your CD-ROM drive is not assigned to drive letter d, use the appropriate drive letter), and then click OK.
The minimum system checks screen appears during installation	Your system does not meet the minimum requirements to install the software. Click Details to see what the specific problem is. Then correct the problem before attempting to install the software.

problem

A red X or yellow triangle appears on the USB connect prompt

possible cause and solution**do the following**

- 1 Verify that the front panel cover is firmly adhered to the device, then unplug the HP psc and plug it in again.
For more information on how to attach the front panel cover, see **I received a message to attach the front panel cover** on page 64.
- 2 Verify that the USB and power cables are plugged in.

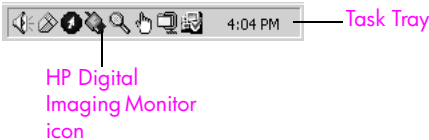


- 3 Verify that the USB cable is set up properly as follows:
 - Unplug the USB cable and plug it in again.
 - Do not attach the USB cable to a keyboard or non powered hub.
 - Verify that the USB cable is 3 meters or less in length.
 - If you have several USB devices attached to your computer, you might want to unplug the other devices during the installation.
- 4 Continue with the installation and reboot the computer when prompted. Then open director and check for the essential icons (scan picture, scan document, and hp image zone [Windows] or hp gallery [Macintosh]).
If the essential icons do not appear, remove the software and then reinstall it as described in **Some of the icons are missing in the hp director** on page 62.

I received a message that an unknown error has occurred

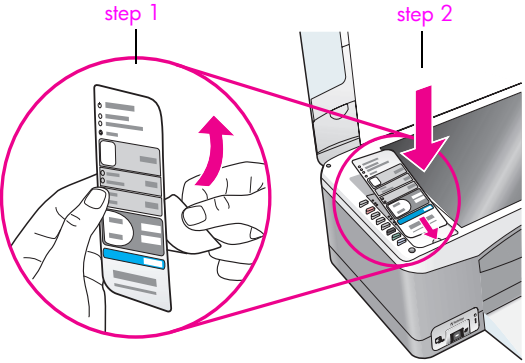
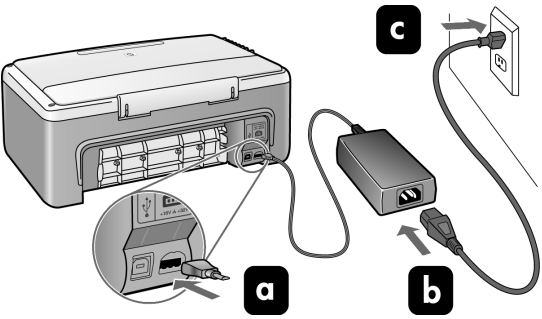
Try to continue with the installation. If that doesn't work, stop and then restart the installation.

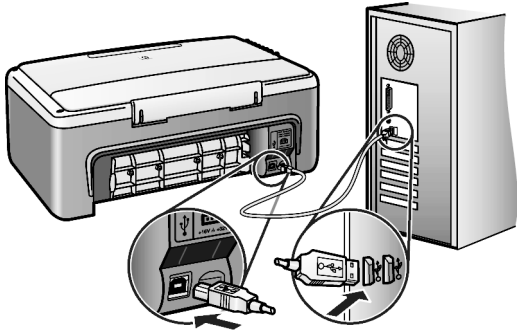
problem	possible cause and solution
<p>Some of the icons are missing in the hp director</p>	<p>If the essential icons do not appear, your installation might not be complete. The essential icons are scan picture, scan document, and hp image zone (Windows) or hp gallery (Macintosh).</p> <p>If your installation is incomplete you might need to uninstall and then reinstall the software. Do <i>not</i> simply delete the HP psc program files from your hard drive. Be sure to remove them properly using the uninstall utility provided in the HP psc program group.</p> <p>to uninstall from a Windows computer</p> <ol style="list-style-type: none"> 1 Disconnect your HP psc from your computer. 2 On the Windows task bar, click Start, Programs or All Programs (XP), HP, PSC All-In-One 1310 series, Uninstall. 3 Finally, make sure that the print driver is installed. 4 Follow the directions on the screen. <p>Note: Make sure the HP PSC is disconnected from your computer before continuing with uninstall procedure.</p> 5 If you are asked whether you would like to remove shared files, click No. <p>Other programs that use these files might not work properly if the files are deleted.</p> 6 After the software is uninstalled, restart your computer. 7 To reinstall the software, insert the HP PSC 1310 Series CD-ROM into your computer's CD-ROM drive, and follow the onscreen instructions. 8 After the software is installed, connect the HP PSC to your computer. Turn on the HP PSC by pressing the On/Resume button. To continue with the installation, follow the onscreen instructions and the instructions provided in the Setup Poster that came with your HP PSC. <p>After connecting and turning on your HP psc, you might have to wait several minutes for all of the Plug and Play events to complete. When the software installation is complete, you will see a Digital Imaging Monitor icon in the task tray.</p> 9 To verify that the software is properly installed, double-click the HP Director icon on the desktop. If the HP Director shows the essential icons, the software has been properly installed.

problem	possible cause and solution
Some of the icons are missing in the hp director (continued)	<p>to uninstall from a Macintosh computer</p> <ol style="list-style-type: none"> 1 Disconnect the HP psc from your computer. 2 Double-click the Applications:HP All-in-One Software folder. 3 Double-click HP Uninstaller. 4 Follow the onscreen instructions. 5 After the software is uninstalled, disconnect your HP psc, and restart your computer. 6 To reinstall the software, insert the HP PSC 1310 Series CD-ROM into your computer's CD-ROM drive. Note: When reinstalling the software, follow the instructions on the Setup Poster. Do not connect the HP psc to your computer until after you have completed the software installation. 7 On the desktop, open the CD-ROM, double-click hp all-in-one installer, and follow the onscreen instructions.
The registration screen does not appear	Launch the Product Registration program in the HP folder on the Windows Start menu. Click Start, Programs or All Programs (XP), HP, PSC All-In-One 1310 series, Product Registration .
The Digital Imaging Monitor does not appear in the Task Tray	<p>If the Digital Imaging Monitor does not appear in the Task Tray, wait several minutes. If it still doesn't appear, start the director to check whether or not essential icons are there. For more information, see Some of the icons are missing in the hp director on page 62.</p> <p>The Task Tray normally appears in the lower-right corner of the Windows desktop.</p>  <p>The screenshot shows a portion of the Windows taskbar. On the right side, the system tray (Task Tray) is visible, containing several icons including network, volume, and power. The HP Digital Imaging Monitor icon is highlighted with a pink box and a label. A line points from the label to the icon. The system clock shows 4:04 PM.</p>
The installation stops when the additional setup instruction screen appears, even though the USB cable is plugged in.	<p>The front panel cover might not be properly attached.</p> <p>follow these steps</p> <ol style="list-style-type: none"> 1 Check the front panel for an error message about attaching the front panel cover. 2 If necessary, attach the front panel cover. For more information, see I received a message to attach the front panel cover on page 64. 3 Turn off the product and then turn it back on again.

hardware installation troubleshooting

Use this section to solve any problems you might encounter while installing the HP psc hardware.

problem	possible cause and solution
<p>I received a message to attach the front panel cover</p>	<p>The front panel cover is not attached, or it is attached incorrectly.</p> <p>to attach the front panel cover</p> <ol style="list-style-type: none"> 1 Remove the adhesive backing from the front panel cover.  <ol style="list-style-type: none"> 2 Raise the lid of the HP psc. Place the front panel cover into the recess and stick it into place. <p>Note: The HP psc will not work until you attach the front panel cover.</p>
<p>My HP psc does not turn on</p>	<p>Make sure each of the power cords is firmly connected, and wait a few seconds for the HP psc to turn on. Also, if the HP psc is plugged in to a power strip, make sure the strip is turned on.</p> 

problem	possible cause and solution
The USB port is not connected	<p>Connecting your computer to your HP psc with a USB cable is straightforward. Simply plug one end of the USB cable into the back of your computer and the other into the back of the HP psc. You can connect to any USB port on the back of your computer.</p> 

hp instant share setup troubleshooting

HP Instant Share setup errors (such as might occur when setting up the Address Book) are covered in the HP Instant Share screen-specific help. Specific operational troubleshooting information is provided in **operational troubleshooting** on page 65.

operational troubleshooting

The **hp psc 1310 series** troubleshooting section in the **hp image zone help** contains troubleshooting tips for some of the most common issues associated with your HP psc. To access the troubleshooting information from a Windows computer, go to the HP Director, click Help, and then choose Troubleshooting and Support. Troubleshooting is also available through the Help button that appears on some error messages.

To access troubleshooting information from the Macintosh (OS X), click the HP Director (All-in-One) icon in the Dock, select HP Help from the HP Director menu, select HP Image Zone Help, and then click hp psc 1310 series troubleshooting in the Help Viewer.

If you have Internet access, you can get help from the HP website at:

www.hp.com/support

The website also provides answers to frequently asked questions.

hp instant share troubleshooting

Basic HP Instant Share troubleshooting topics are covered in the table below. When you access the HP Instant Share website, online help is provided for any error messages encountered.

error message	possible cause and solution
Can't connect to the Internet	Your computer is unable to connect to the HP Instant Share server after the Go Online screen appears. <ul style="list-style-type: none"> • Check your Internet connection and make sure you are online. • If you are behind a firewall, verify that your browser proxy settings are correct.
HP Instant Share Service temporarily unavailable	The HP Instant Share server is currently down for maintenance. <ul style="list-style-type: none"> • Try connecting again later.

PictBridge port troubleshooting

The functionality of the PictBridge port is managed by the PictBridge-compliant camera you connect. Most solutions will be found in your camera user guide. Here are some problems you might encounter using the PictBridge port.

problem	possible cause and solution
You connect a camera and nothing happens	<ul style="list-style-type: none"> • The camera is not PictBridge-compliant or is not in PictBridge mode. Disconnect your camera and refer to your camera's user guide to determine if it is PictBridge-compliant. If it is, the user guide should tell you how to set the camera in PictBridge mode. If your camera is not PictBridge-compliant, you may need to connect your camera directly to your computer in order to print photos.
The camera is not responding	<ul style="list-style-type: none"> • The HP PSC still recognizes the presence of the camera, but the camera is not responding. Disconnect the camera. Turn off the camera, then turn it on again. Be sure it is in PictBridge mode. Reconnect the camera.
Printing stopped in the middle of a photo	<ul style="list-style-type: none"> • The camera lost power or was disconnected. Some cameras turn themselves off after a few minutes if not connected to a power source. Reconnect power to the camera and be sure it is in PictBridge mode. Restart printing.
A photo is corrupted or not supported	<ul style="list-style-type: none"> • You are trying to print an image from the camera that has become corrupted or is not a supported image type on the HP PSC. Check the image on the camera and refer to your camera's user guide for supported image types. The HP PSC accepts photos in jpeg format. Refer to your camera's user guide to set the image type for your photos.
No photos are printing	<ul style="list-style-type: none"> • You may need to select photos on your camera before you can print them. Refer to your camera's user guide and select the photos you want to print.



Index

Numerics

- 4 by 6 inch (10 by 15 cm)
 - borderless copies, 20
 - photo paper, 14

A

- align print cartridges, 33

B

- best copy quality, 20
- borderless photos
 - copy, 20

C

- camera, PictBridge
 - connect, 17
 - print, 17
- cancel
 - copy, 22
 - scan, 24
- cartridges, 28
 - align, 33
 - clean contacts, 35
 - handle, 29
 - ink level, 28
 - order, 25
 - replace, 30
 - store, 32
- clean
 - exterior, 28
 - glass, 27
 - lid backing, 27
 - print cartridge contacts, 35
- copy
 - black-and-white originals, 19
 - borderless photos, 20
 - color originals, 19
 - enlarge, 21
 - number of copies, 20
 - photos, 20
 - photos onto letter paper, 21
 - quality, 20
 - reduce, 21
 - speed, 20
- customer support, 37
 - Australia, 41
 - Eastern Europe, Middle East and Africa, 39

- Japan, 38
- Korea, 38
- North America, 38
- outside U.S., 39
- web site, 37
- Western Europe, 38

D

- Digital Imaging Monitor icon, 63

E

- enlarge copies, 21
- envelopes
 - load, 14
- environment
 - energy consumption, 50
 - environmental product stewardship program, 50
 - inkjet supplies recycling, 51
 - material safety data sheets, 51
 - ozone production, 50
 - paper use, 51
 - plastics, 51
 - protecting, 50
 - recycling program, 51
- essential icons, 61, 62, 63

F

- fast copy quality, 20
- fit to page, 21
- front panel
 - overview, 1
 - status lights, 3

G

- glass cleaning, 27
- greeting cards, load, 15

H

- Hagaki cards, 14
- help, vii
- HP customer support, 37
- HP Director
 - e-mail option (Macintosh), 58
- HP Instant Share access (Windows), 56

- use your hp psc with a computer, 6
- HP distribution center, 43
- HP Instant Share
 - Address Book, 58
 - overview, 55
 - simplified approach, 55
 - use a scanned image, 56
- HP Instant Share (Windows)
 - setup troubleshooting, 65
 - use troubleshooting, 66

I

- ink cartridges, 28
- ink level, 28

L

- labels
 - load, 15
- lid backing, clean, 27
- lights, status, 3
- load
 - A4 paper, 12
 - avoid paper jams, 16
 - envelopes, 14
 - greeting cards, 15
 - Hagaki cards, 14
 - HP Premium Paper, 15
 - labels, 15
 - letter paper, 12
 - originals, 11
 - postcards, 14
 - recommended papers, 15

M

- maintenance
 - align print cartridges, 33
 - clean glass, 27
 - clean the exterior, 28
 - clean the lid backing, 27
 - ink level, 28
 - replace print cartridges, 30
 - self-test report, 29
 - sounds, 36

N

- number of copies
 - copy, 20

O

- order
 - media, 25
 - other supplies, 25
 - print cartridges, 25

P

- paper
 - load, 11
 - order, 25
 - recommended types, 15
 - set type, 15
- phone numbers, customer support, 37
- photos
 - borderless copies, 20
- PictBridge
 - connect a camera, 17
 - print from a camera, 17
- postcards, 14
- print
 - from a camera, 17
 - self-test report, 29
- print cartridges, 28
 - align, 33
 - clean contacts, 35
 - correct one for job, 32
 - handle, 29
 - ink level, 28
 - order, 25
 - protector, 32
 - replace, 30
 - store, 32
- protector, print cartridge, 32

Q

- quality
 - copies, 20

R

- reduce copies, 21
- regulatory notices, 51
 - Australian statement, 52
 - declaration of conformity (European Union), 53
 - declaration of conformity (U.S.), 54
 - FCC statement, 52
 - geräuschemission, 52
 - Korean statement, 53
 - notice to users in Canada, 52
 - regulatory model
 - identification number, 51
 - VCCI-2 (Japan), 53
- replace print cartridges, 30
- report, self-test, 29
- return your HP PSC, 41

S

- scan
 - cancel, 24
 - from the front panel, 23
- self-test report, 29
- send a photo
 - Macintosh, 57
 - use a scanned image, 57
- ship your HP PSC, 41
- size
 - copies, 21
- software
 - use your hp psc with a computer, 6
- sounds from the HP PSC, 36
- speed
 - copy, 20
- status lights, 3

stop

- copy, 22
- scan, 24
- support, 37

T

- technical information
 - copy specifications, 50
 - environmental
 - specifications, 50
 - paper specifications, 49
 - photo memory card
 - specifications, 50
 - physical specifications, 50
 - power specifications, 50
 - print margin specifications, 49
- telephone numbers, customer support, 37
- troubleshooting
 - essential icons, 61, 62, 63
 - hardware and software
 - installation, 59
 - hardware installation, 64
 - HP Instant Share (Windows), 65, 66
 - installation, 59
 - operations, 65
 - software installation, 60

U

- USB cable installation, 65

W

- warranty
 - duration, 45
 - service, 45
 - statement, 46
 - upgrades, 45

Visit the [hp psc information center](#)

It has everything you need to get the most value from your HP psc.

- Technical Support
- Supplies and Ordering Information
- Project Tips
- Ways to Enhance Your Product

www.hp.com/support

© Copyright 2004 Hewlett-Packard Development Company, L.P.



Printed on recycled paper.

Printed in [country].



Q5763-90152